



Radxa CM3I IO Board

schematic

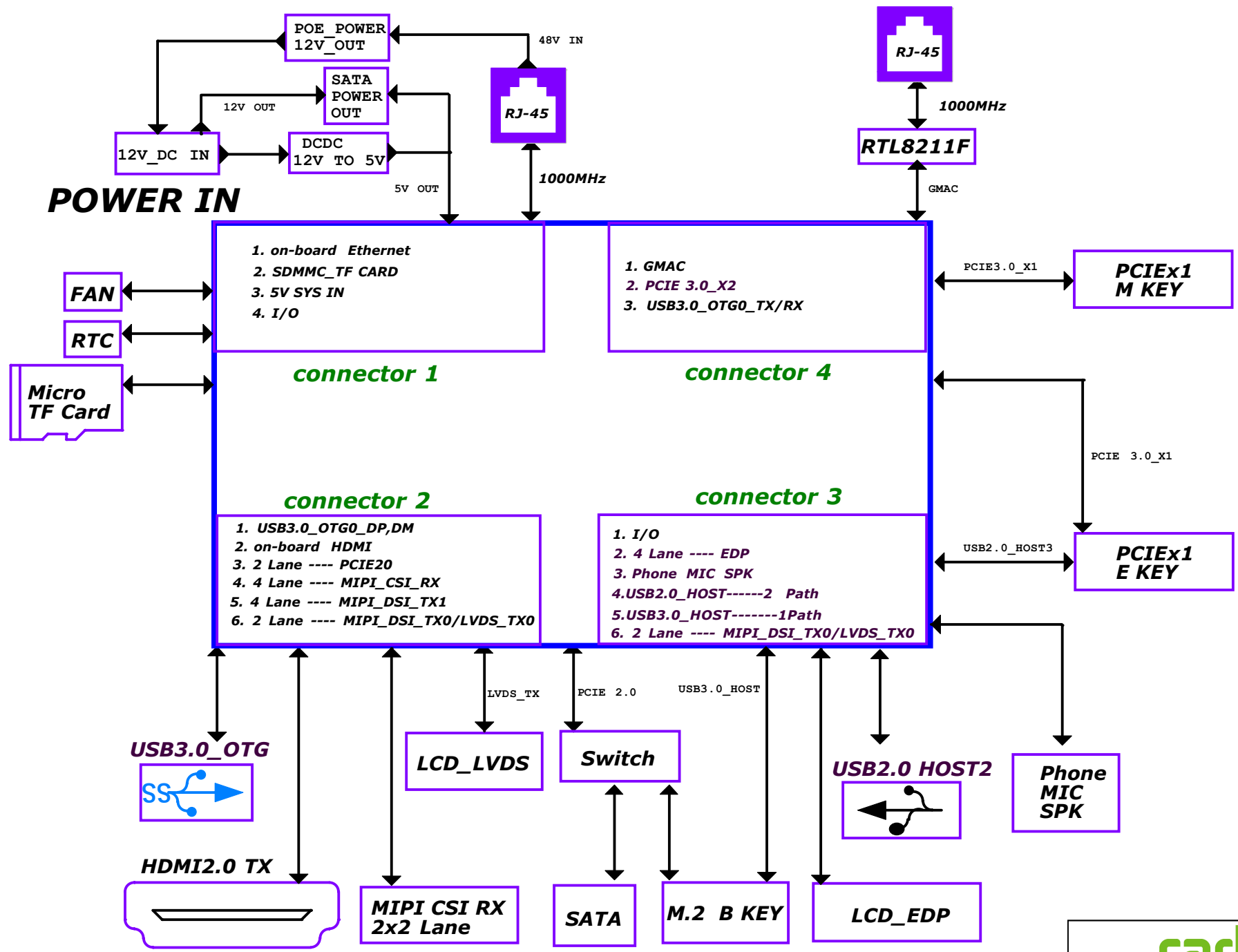
V1.3

Table of Content

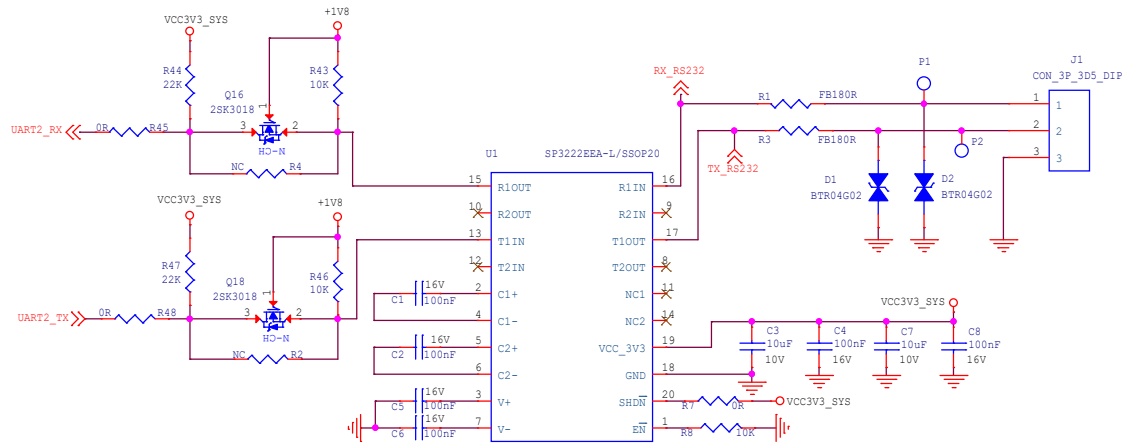
- 01.cover
- 02.Index and Notes
- 03.Block Diagram
- 04.RS232/RS485/CAN
- 05.M.2 B KEY
- 06.M.2 M KEY
- 07.M.2 E KEY
- 08.PCIE_CLK
- 09.SATA_SW
- 10.MIPI_CSI_RX
- 11.EDP_LCD
- 12.MIPI_LCD
- 13.HDMI/TF_OUT
- 14.AUDIO/USB/KEY
- 15.Ethernet 1000M RJ45
- 16.Ethernet 1000MHz_RTL8211
- 17.FAN_RTC_HOLE
- 18.Power DC_IN
- 19.POE_POWER
- 20.GPIO+VCC_Connector
- 21.High Speed Serial_Connector
- 22.IO_Connector
- 23.PCIE3.0_Connector



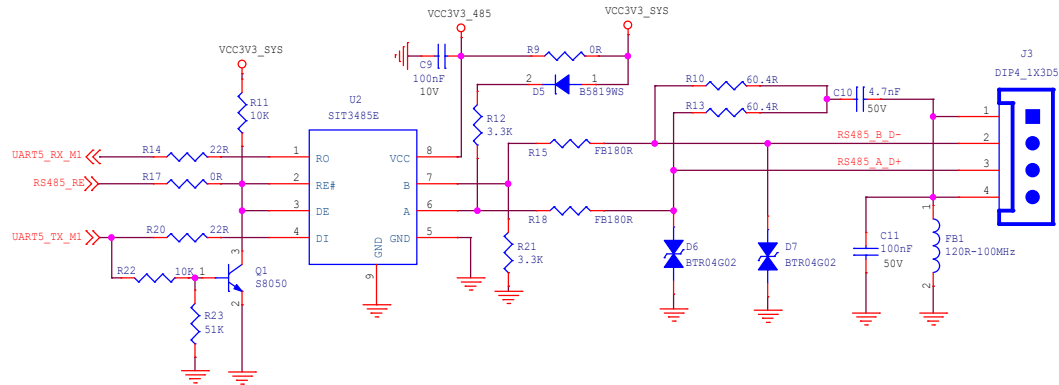
Size	Title: CM3I IO Board	REV
A4	Page Name: Index	V1.3
Date: Monday, November 27, 2023	Sheet 02 of 23	



RS232



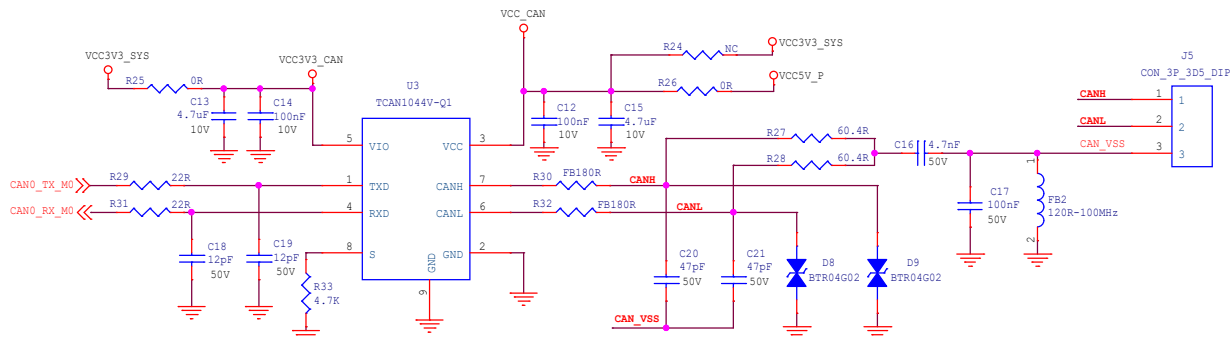
RS485



CAN

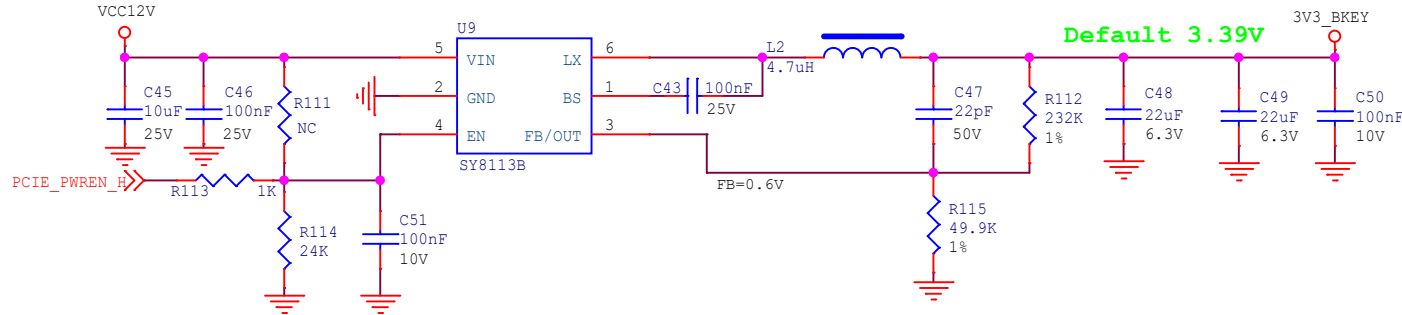
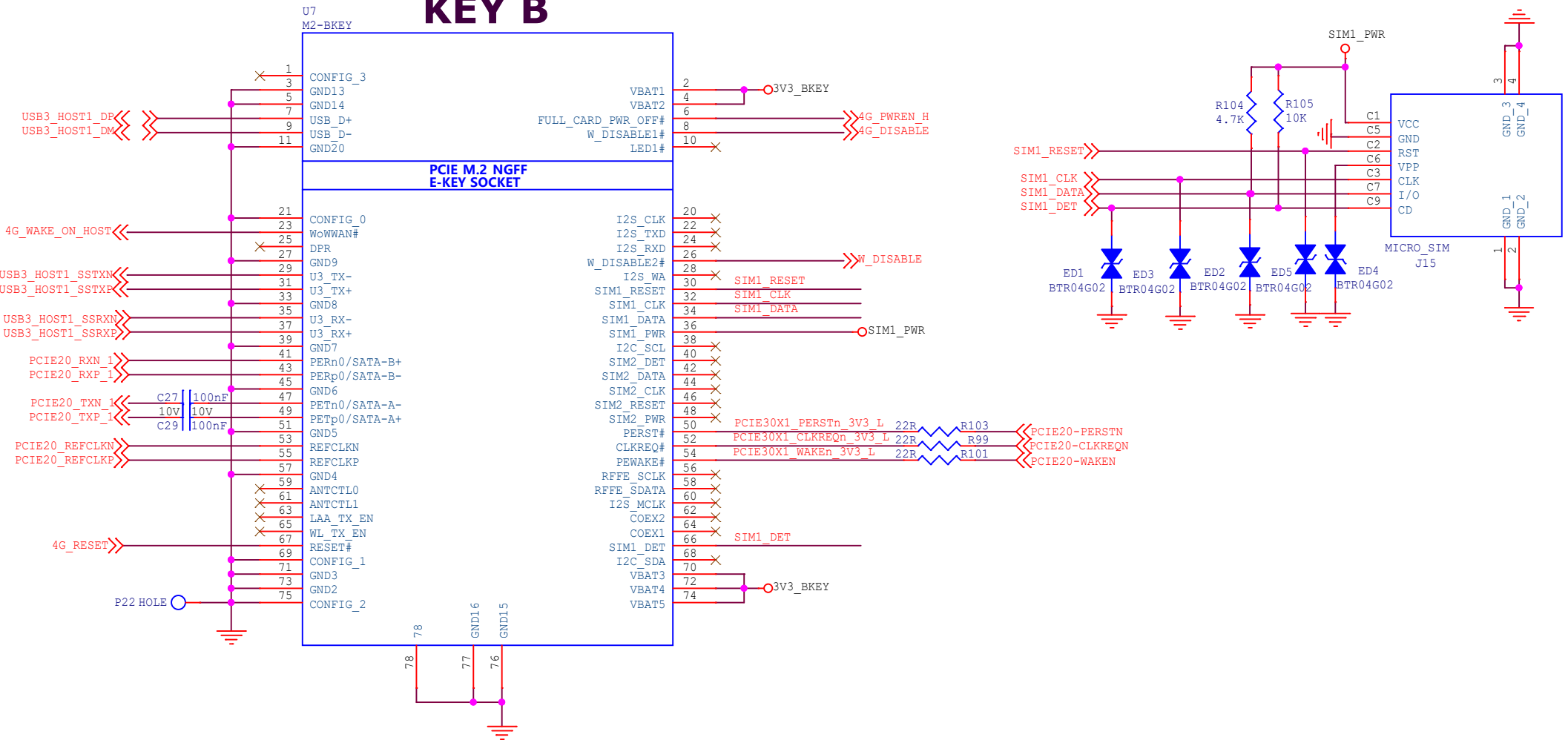
TCAN332G: PIN3=3.3V, PIN5, 8=NC

TCAN1044V-Q1: PIN3=5V, PIN5=VIO, PIN8=S

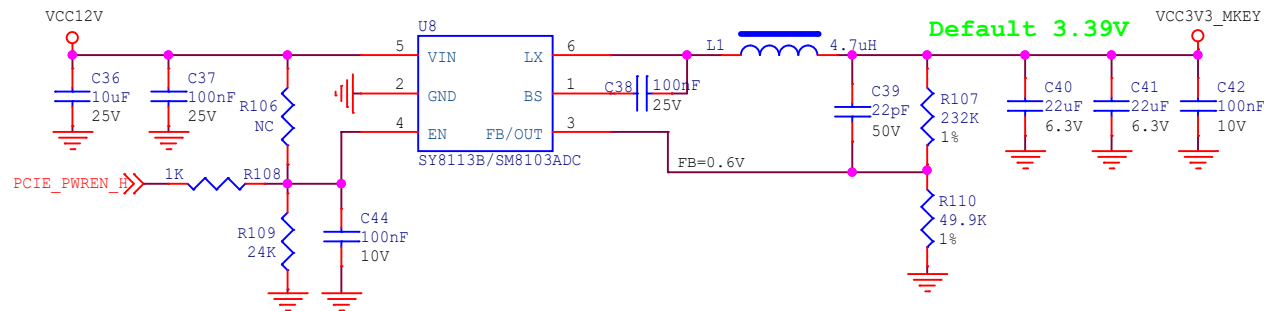
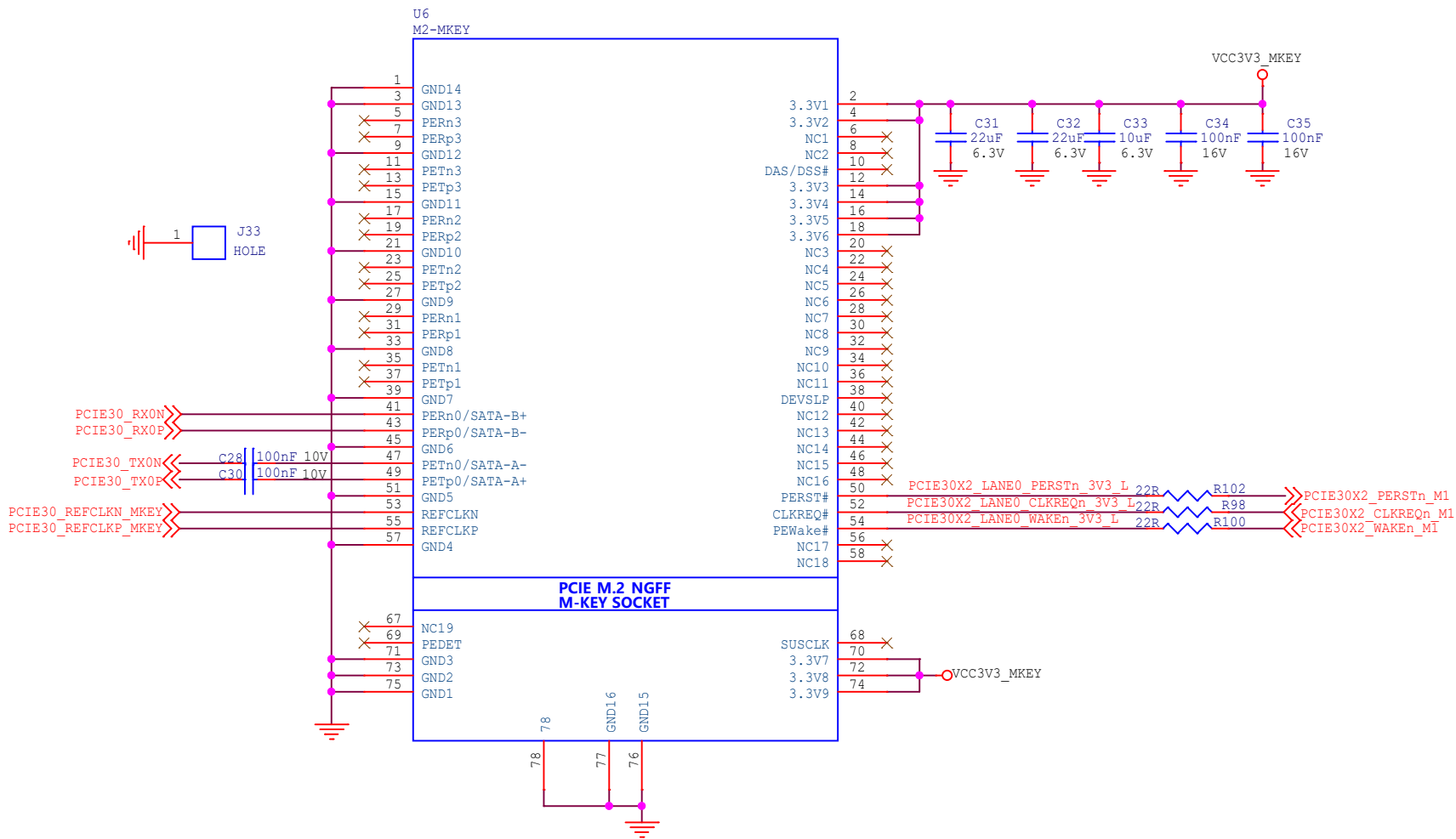


Size	Title:	CM3I IO Board	REV
A3	Page Name:	RS232/RS485/CAN	V1.3
Date:	Monday, November 27, 2023	Sheet	04 of 23

KEY B

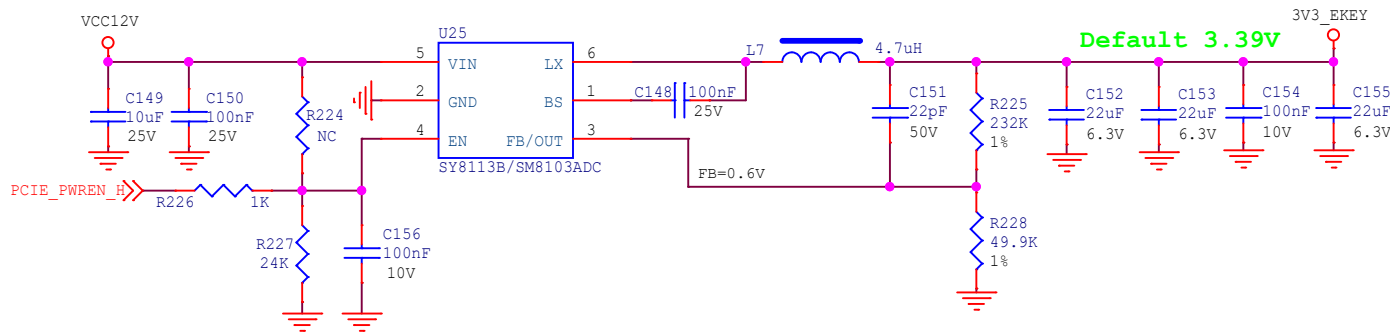
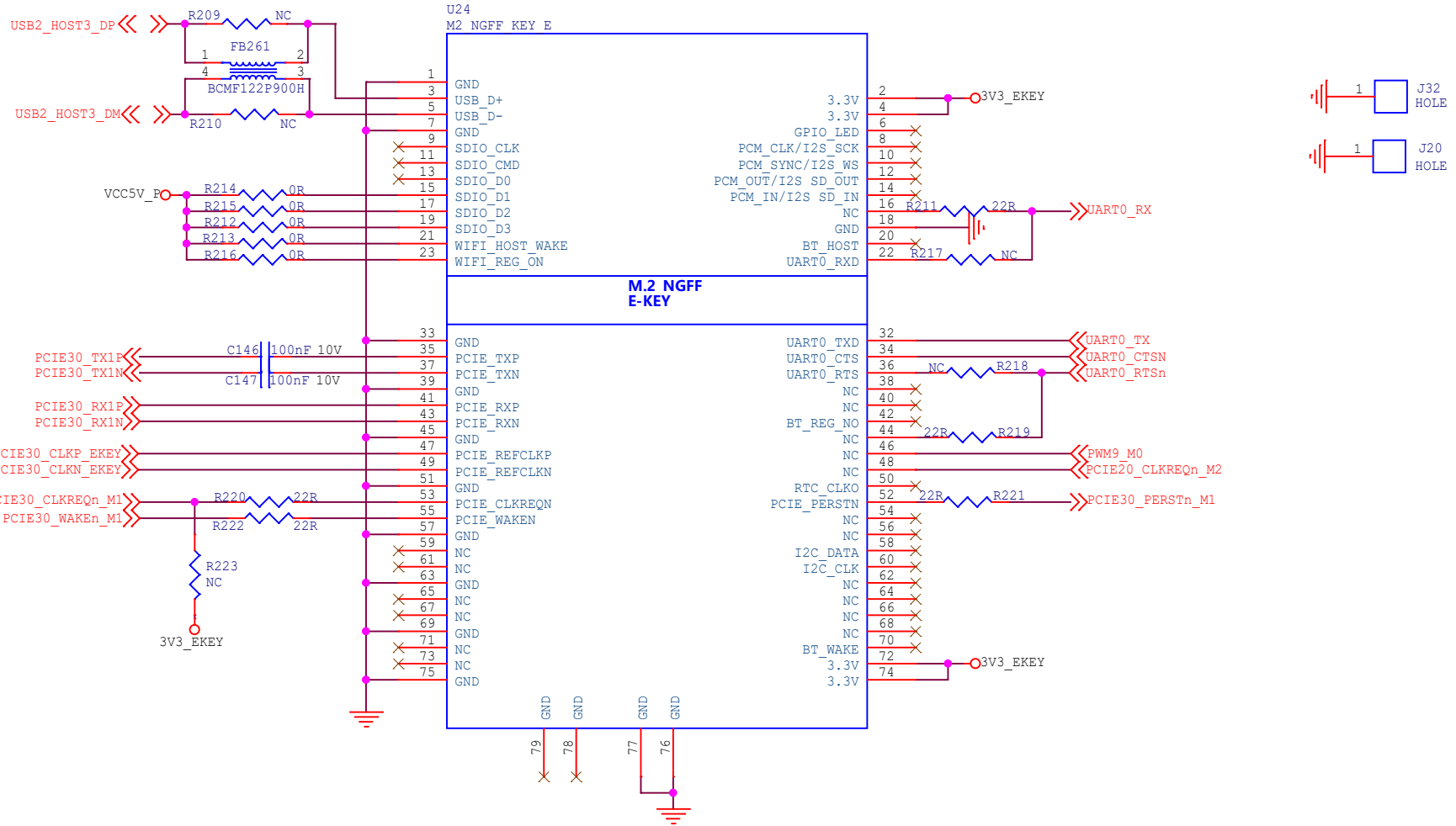


Size	Title:	CM3I IO Board	REV
A4	Page Name:	M.2 B KEY	V1.3
Date:	Monday, November 27, 2023	Sheet	05 of 23



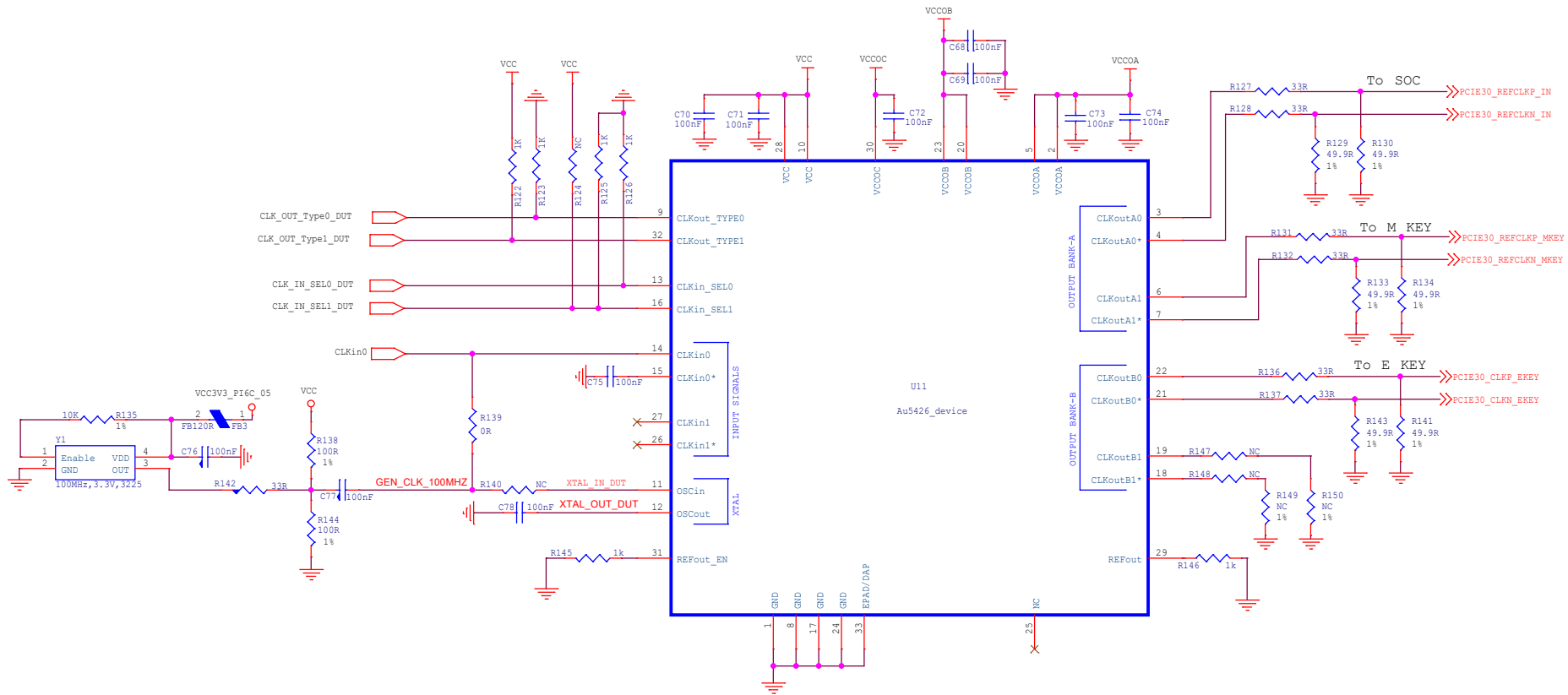
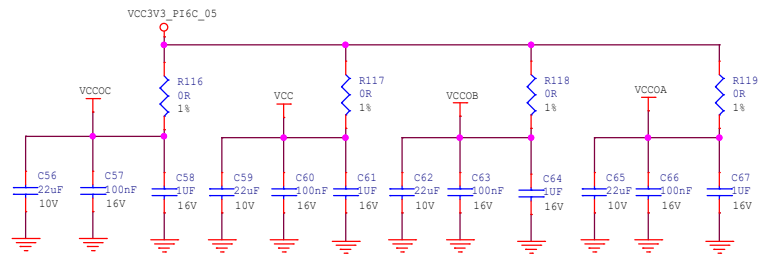
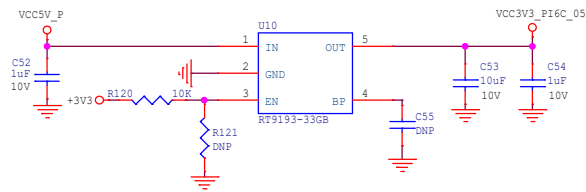
Size	Title:	CM31 IO Board	REV
A4	Page Name:	M.2 M KEY	V1.3
Date:		Monday, November 27, 2023	Sheet 06 of 23

E KEY

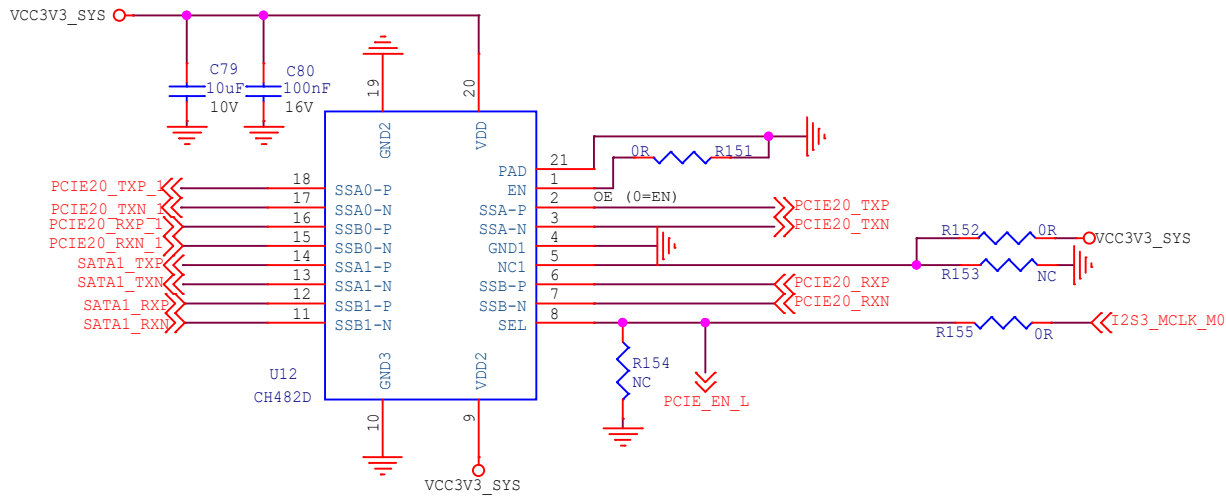
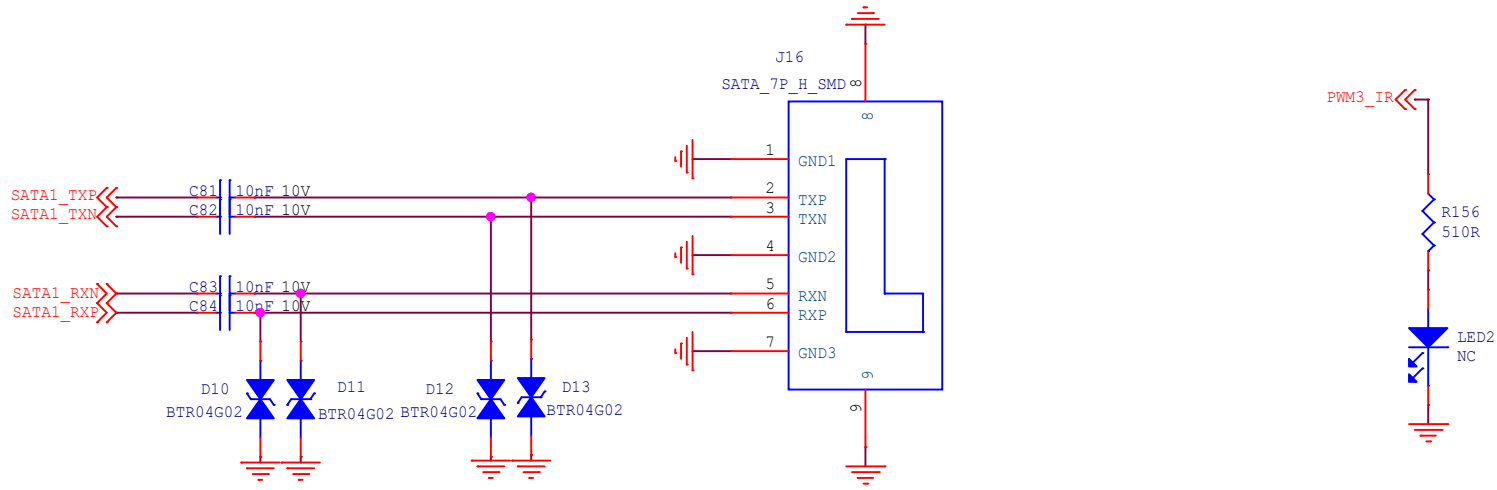


radxa

Size	Title:	CM3I IO Board	REV
A4	Page Name:	M.2 E KEY	V1.3
Date:	Monday, November 27, 2023	Sheet	07 of 23



SATA3.0

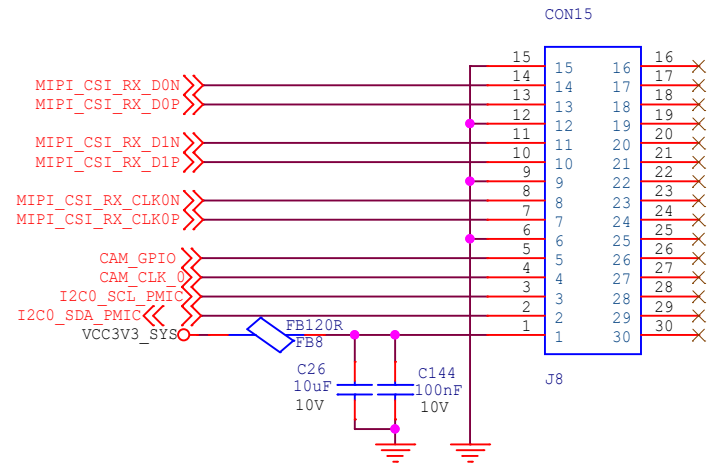


SEL (0=SW0, 1=SW1)

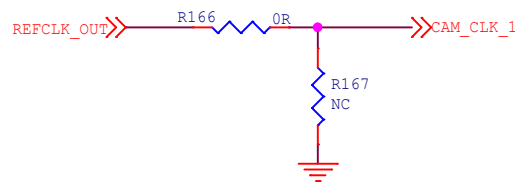
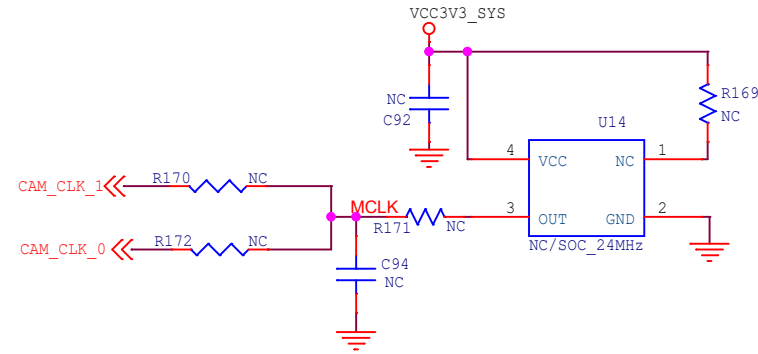
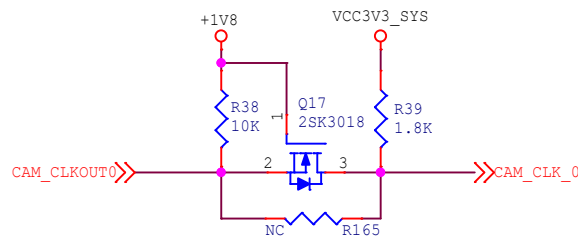
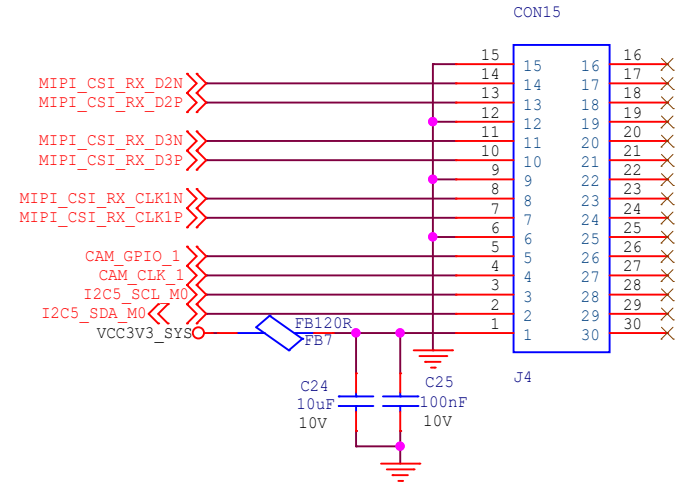


Size	Title: CM3I IO Board	REV
A4	Page Name: SATA SW	V1.3
Date: Monday, November 27, 2023 Sheet 09 of 23		

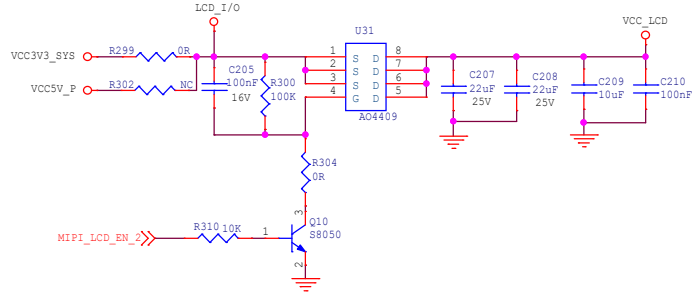
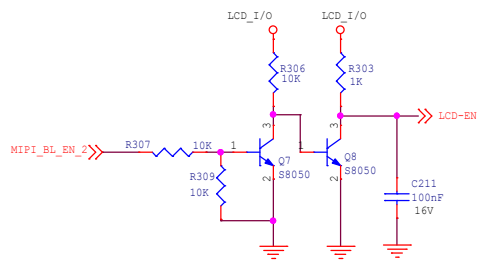
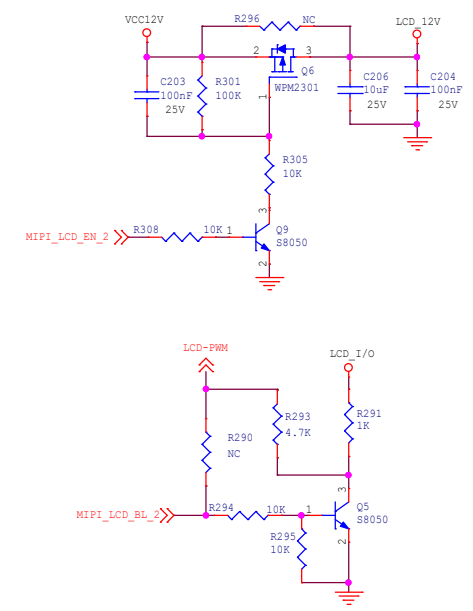
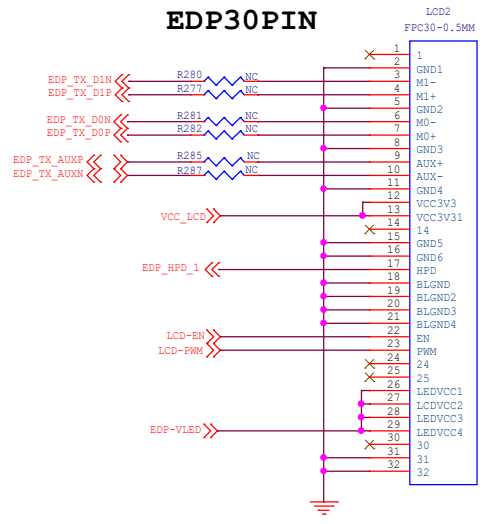
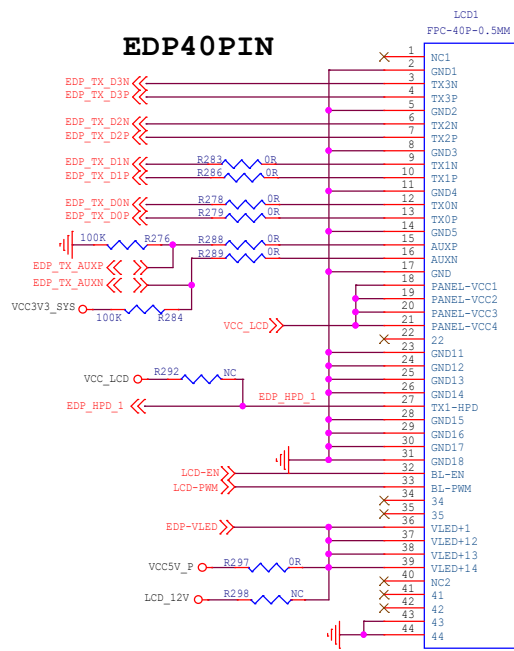
MIPI_CSI_RX 2Lanes



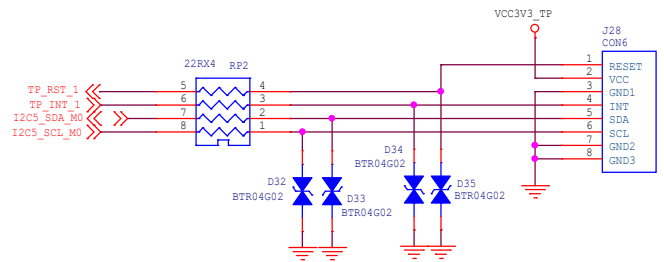
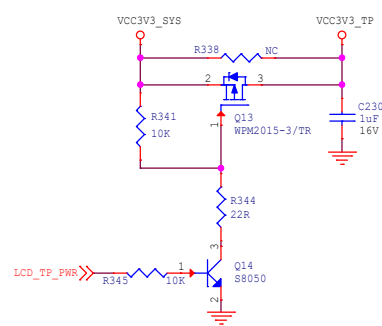
MIPI_CSI_RX 2Lanes



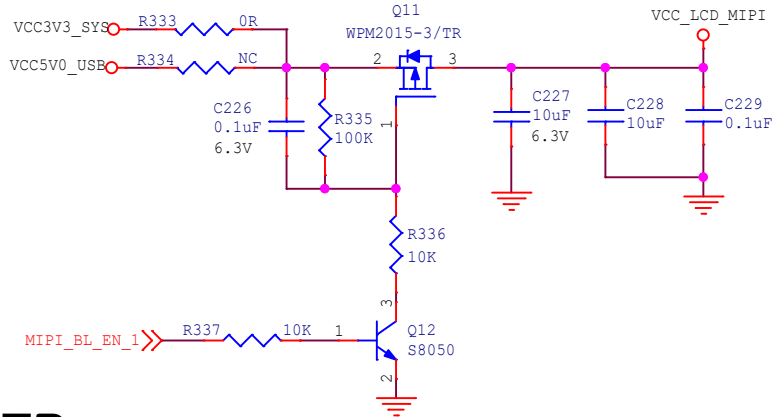
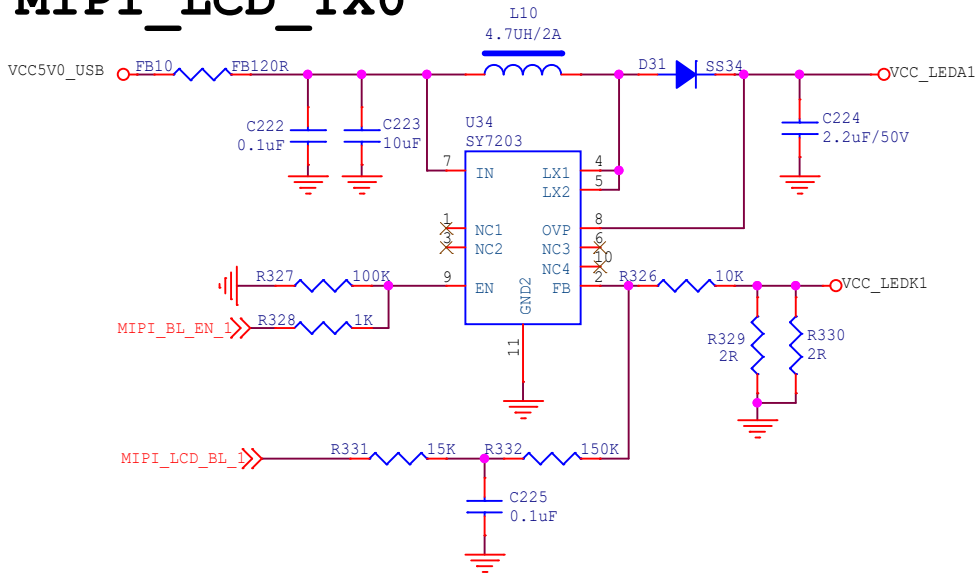
radxa		
Size	Title:	CM3I IO Board
A4	Page Name:	MIPI_CSI_RX
Date:	Monday, November 27, 2023	Sheet 10 of 23
	REV	V1.3



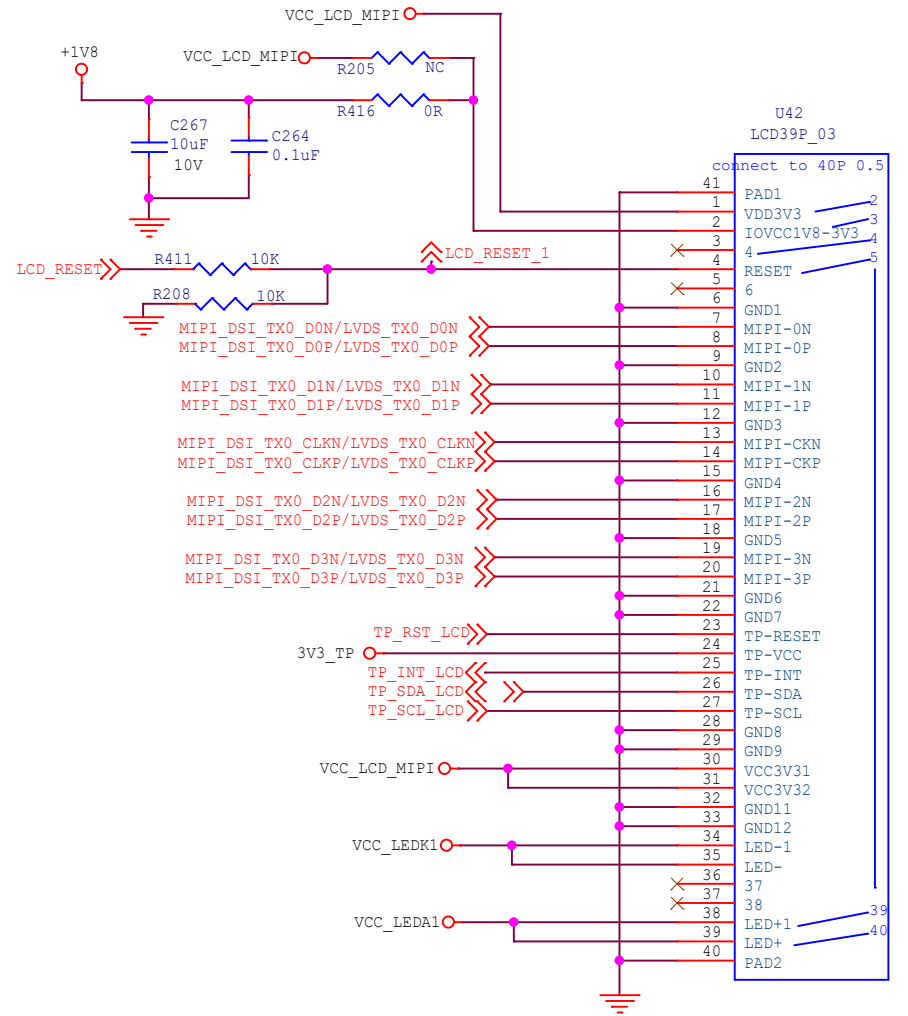
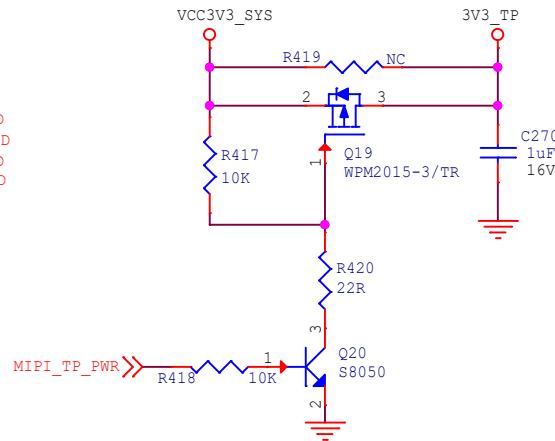
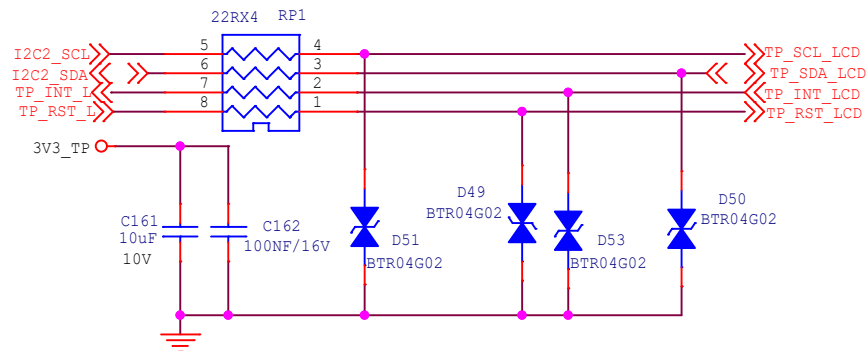
LCD_TP



MIPI_LCD_TX0



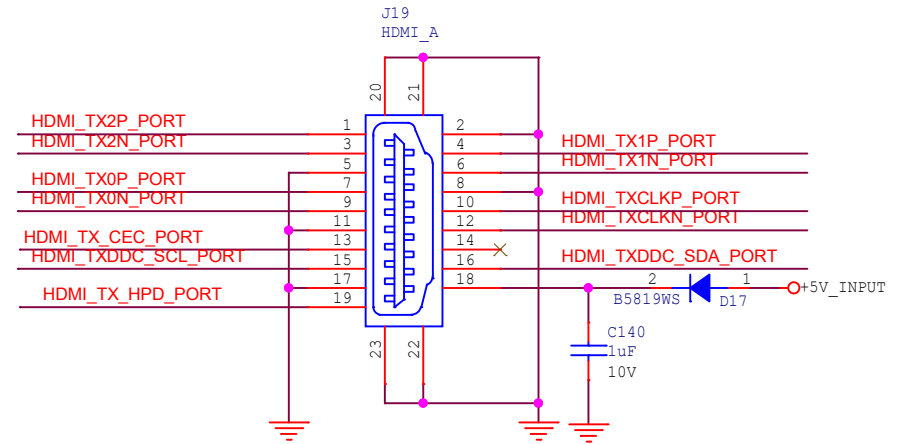
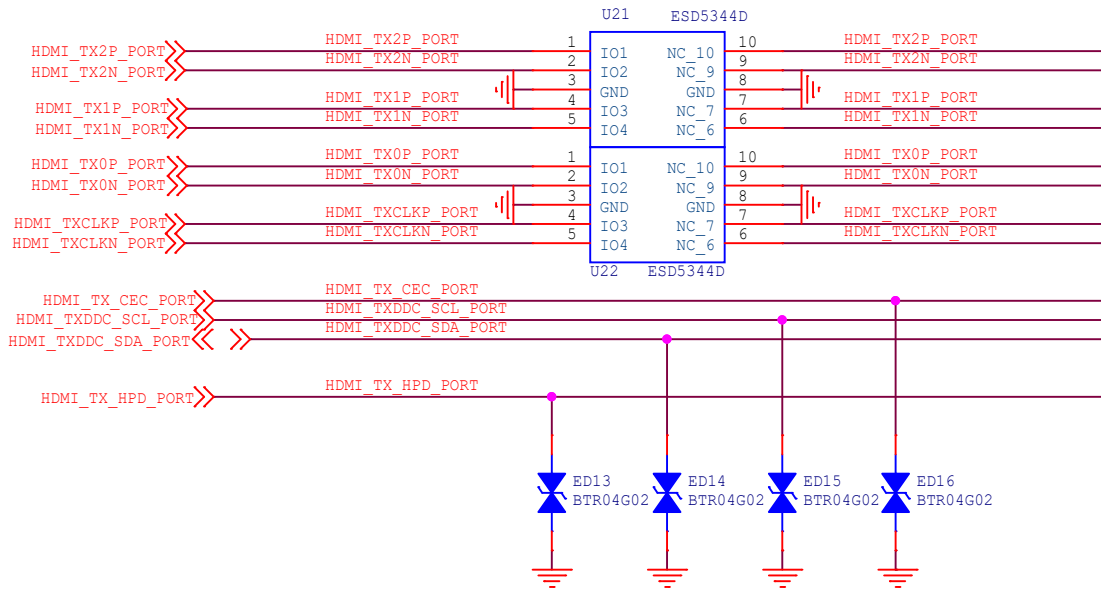
LCD_TP



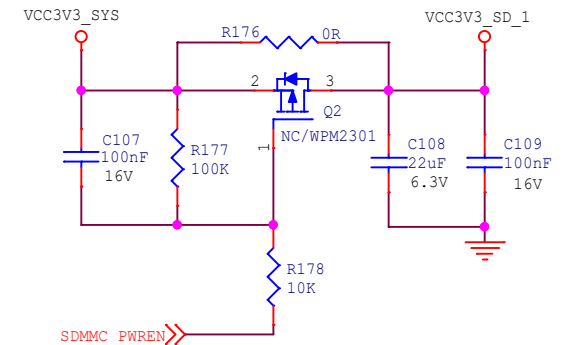
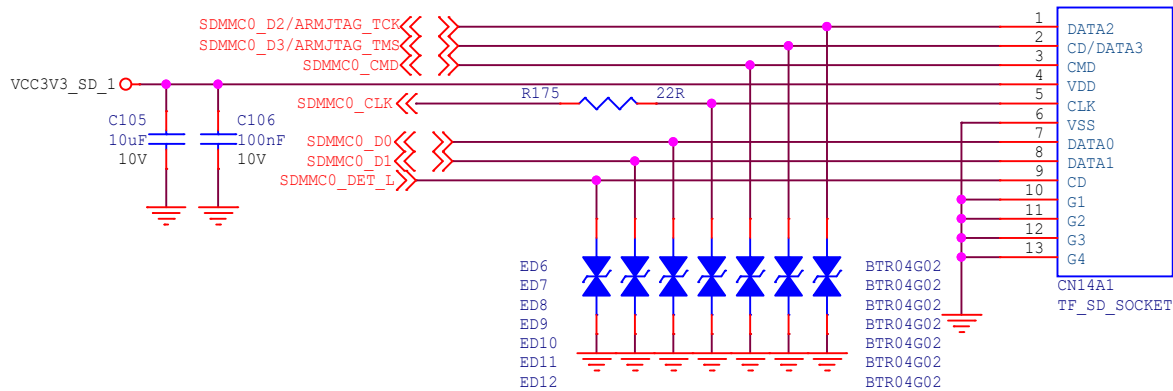
Size	Title:	CM3I IO Board	REV
A4	Page Name:	MIPI_LCD	V1.3
Date:	Monday, November 27, 2023	Sheet	12 of 23

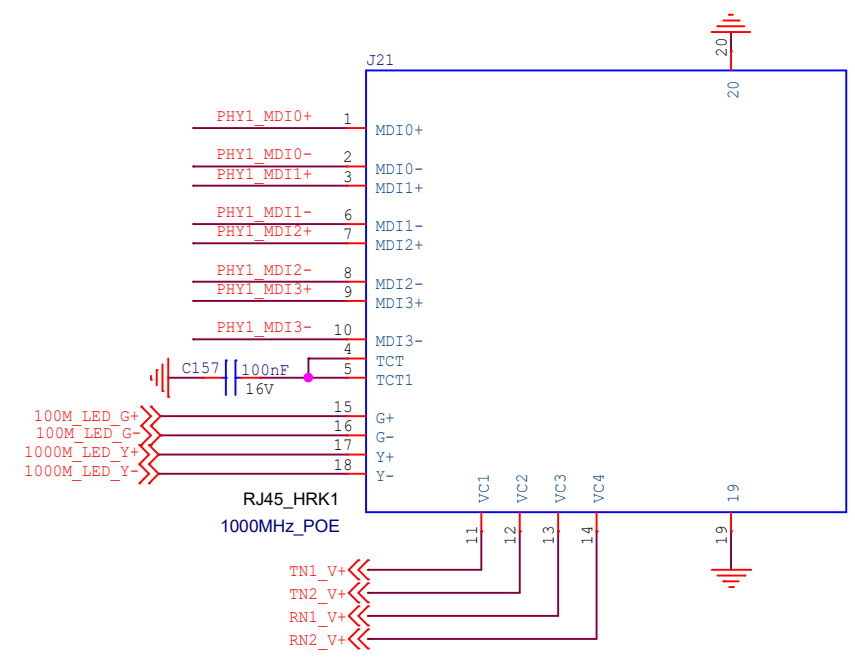
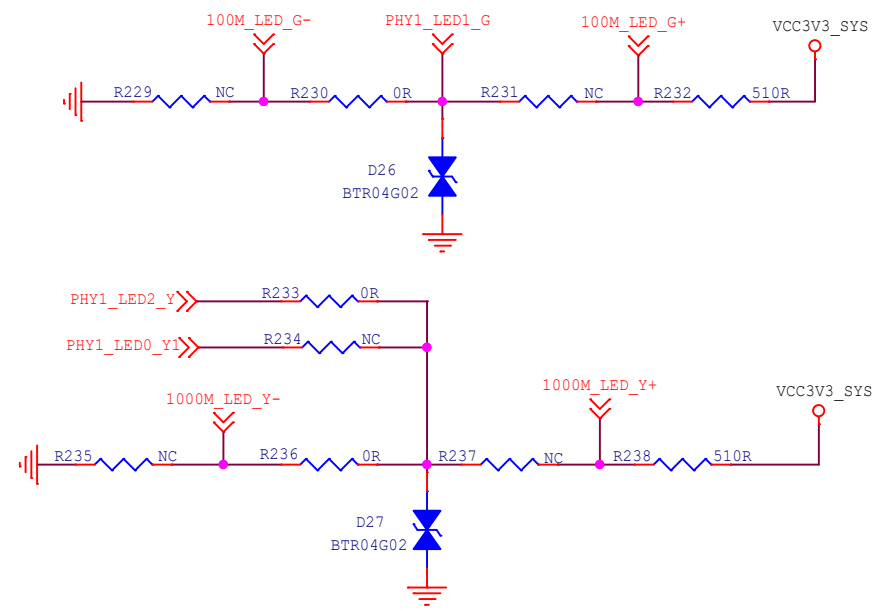
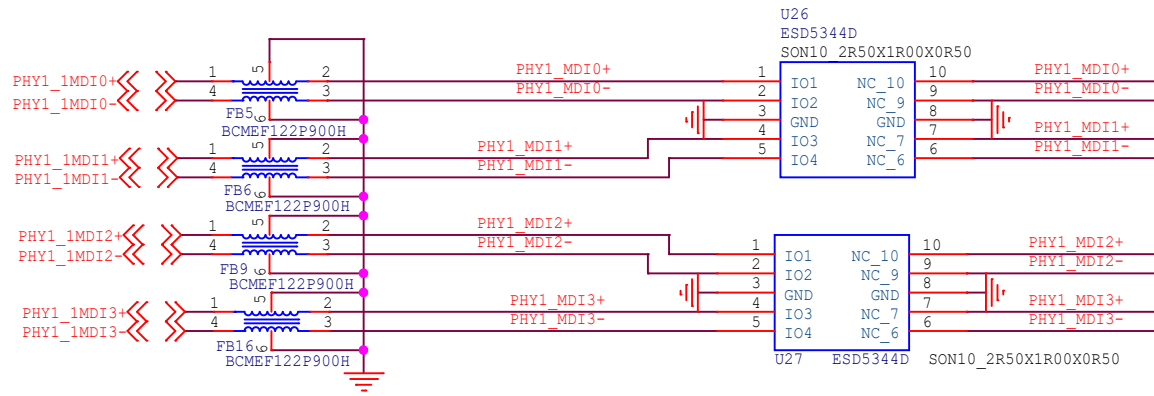
HDMI2.0 TX

$C_j \leq 0.4 \text{ pF}$



MicroSD Card

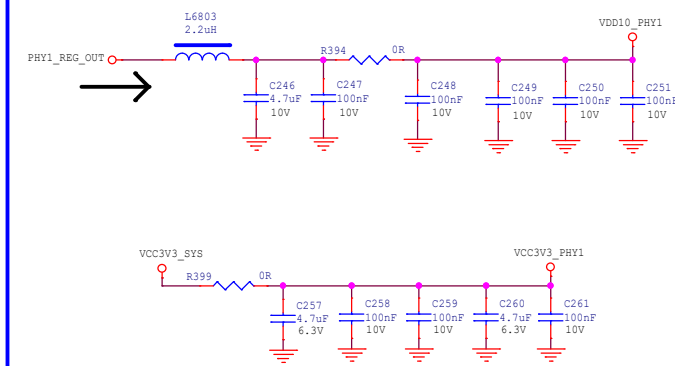
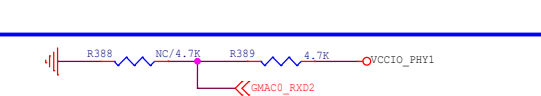
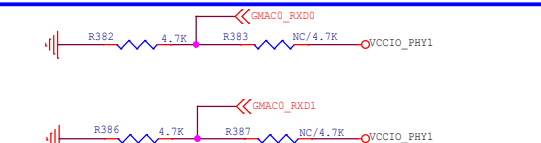
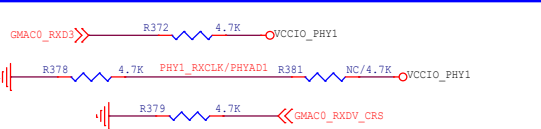
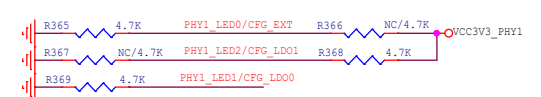
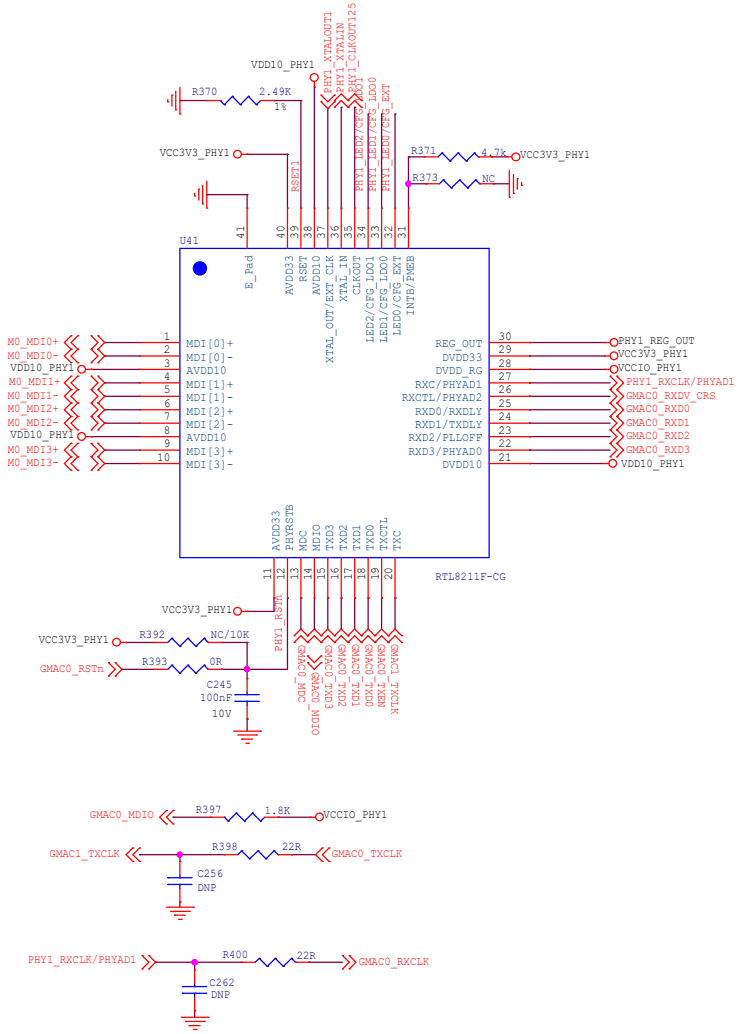
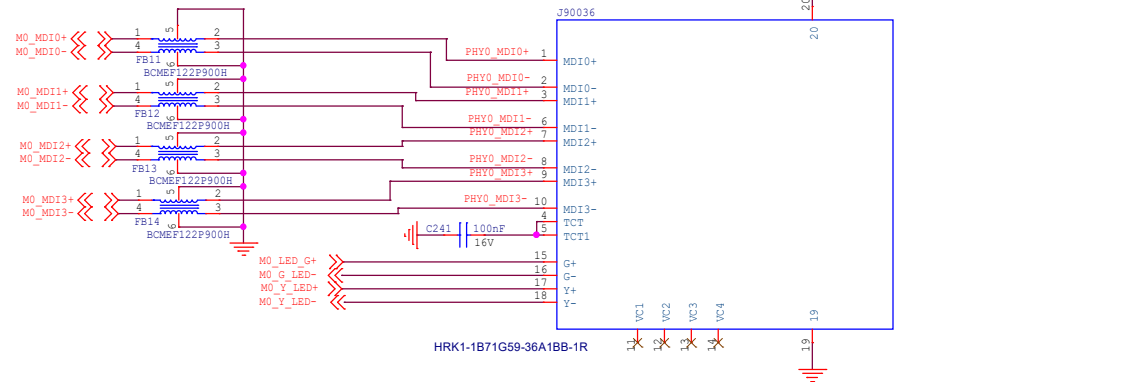
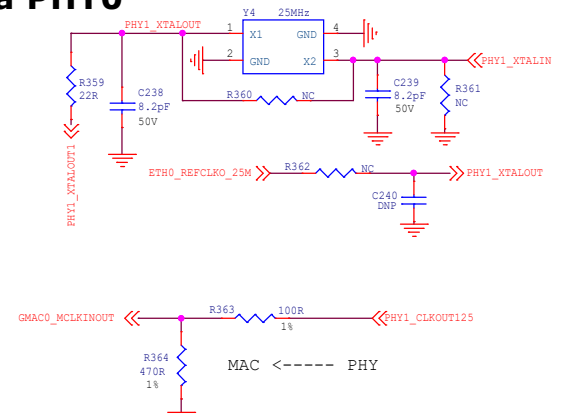




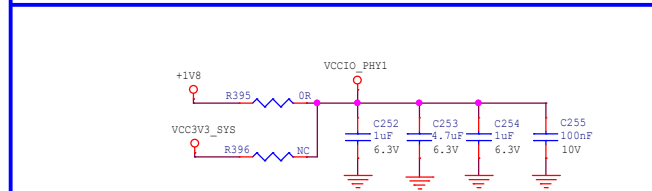
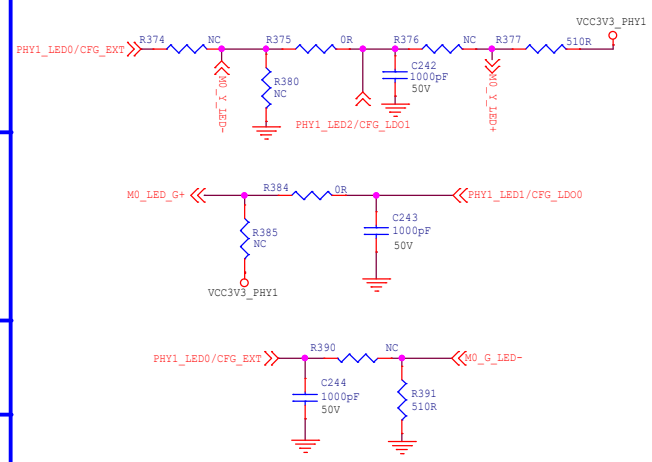
radxa

Size	Title: CM3I IO Board	REV
A4	Page Name: Ethernet 1000M_RJ45	V1.3
Date: Monday, November 27, 2023 Sheet 15 of 23		

Giga PHY0

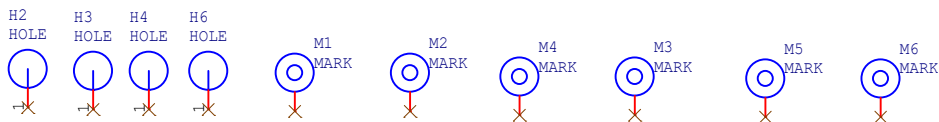
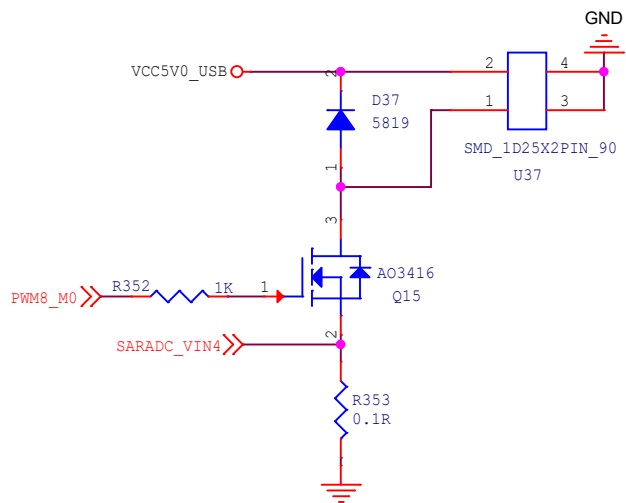
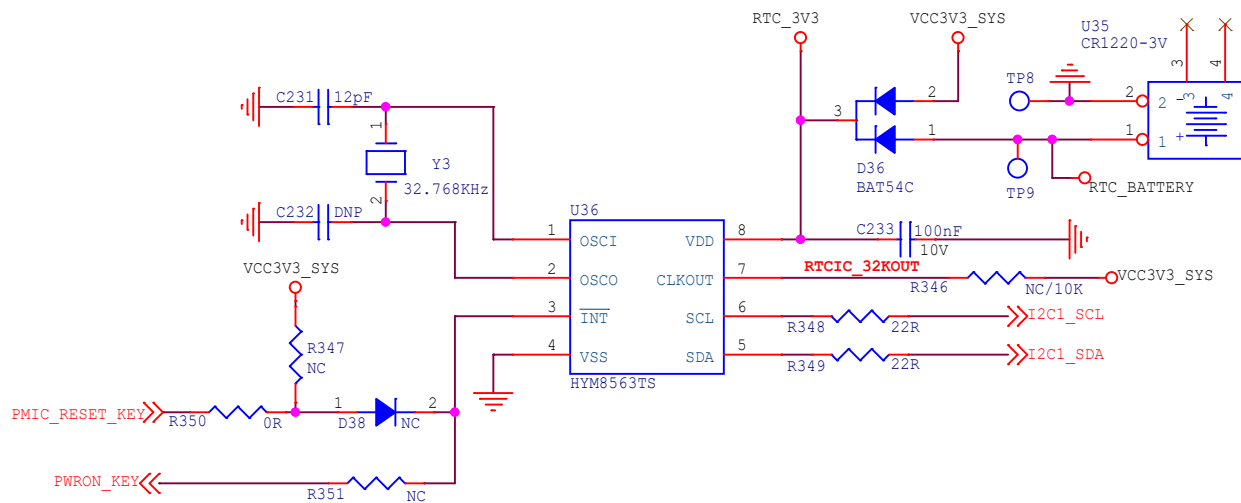


RGMII Power Source	CFG_EXT	CFG_LD0[1:0]
External 3.3V	1'b1	2'b00
External 1.8V	1'b1	2'b10
Internal 1.8V(default)	1'b0	2'b10

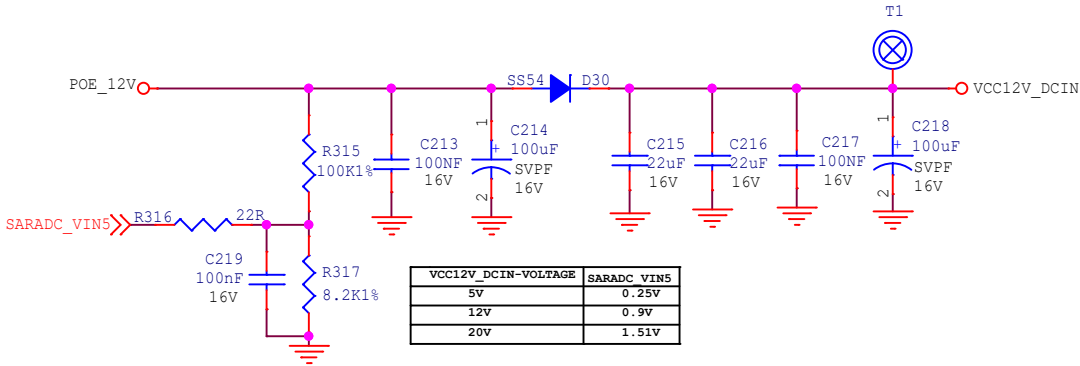
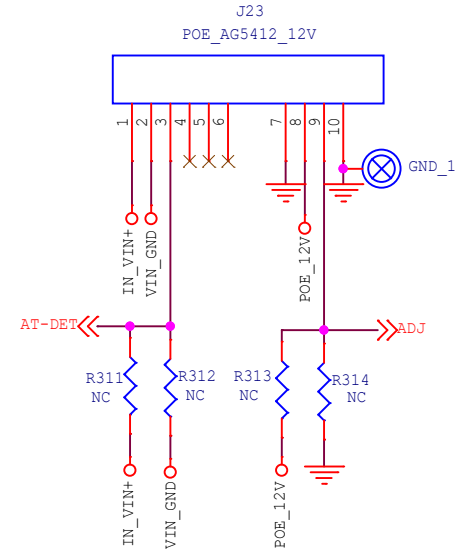
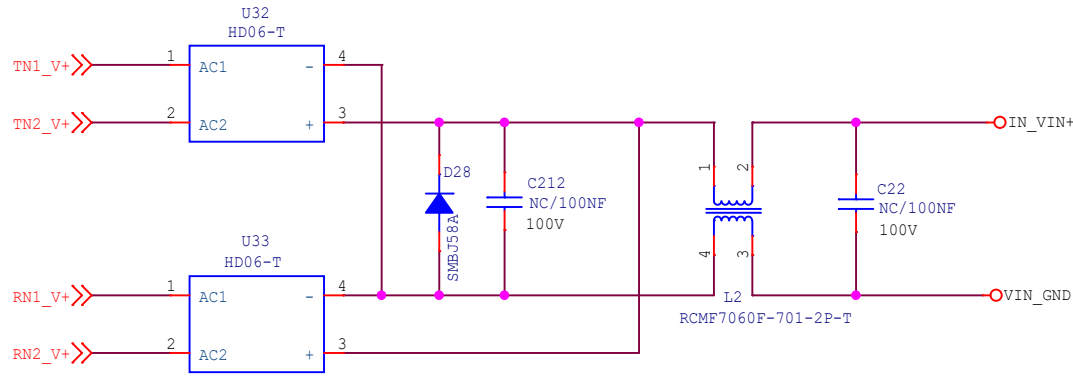


radxa

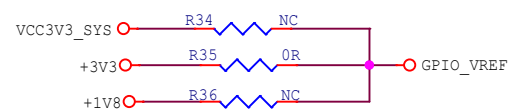
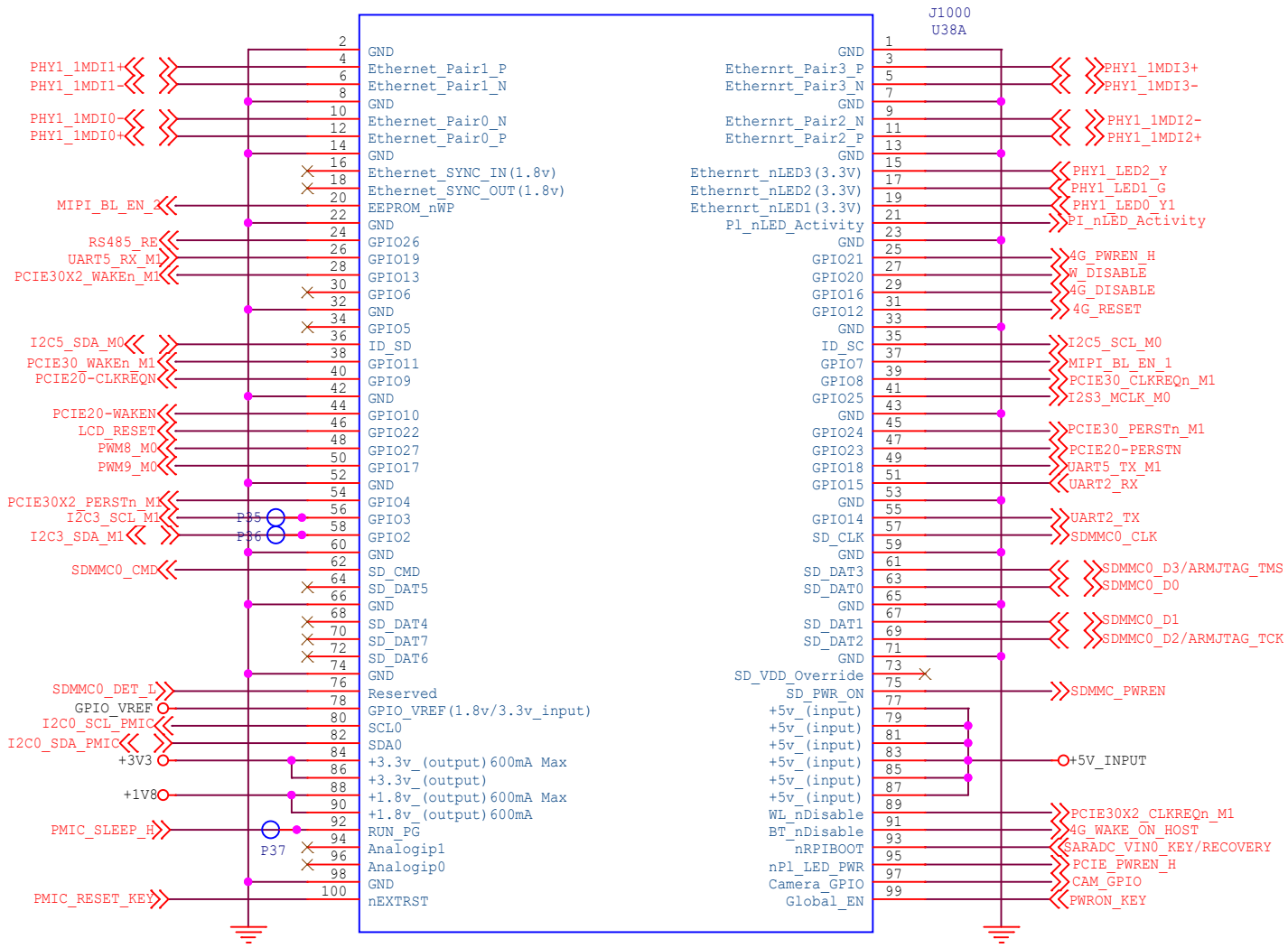
Size	Title:	CM3I IO Board	REV
A3	Page Name:	Ethernet 1000MHz_RTL8211	V1.3
Date:	Monday, November 27, 2023	Sheet	16 of 23




Size	Title:	CM3I IO Board	REV
A4	Page Name:	FAN_RTC_HOLE	V1.3
Date:		Monday, November 27, 2023	Sheet 17 of 23

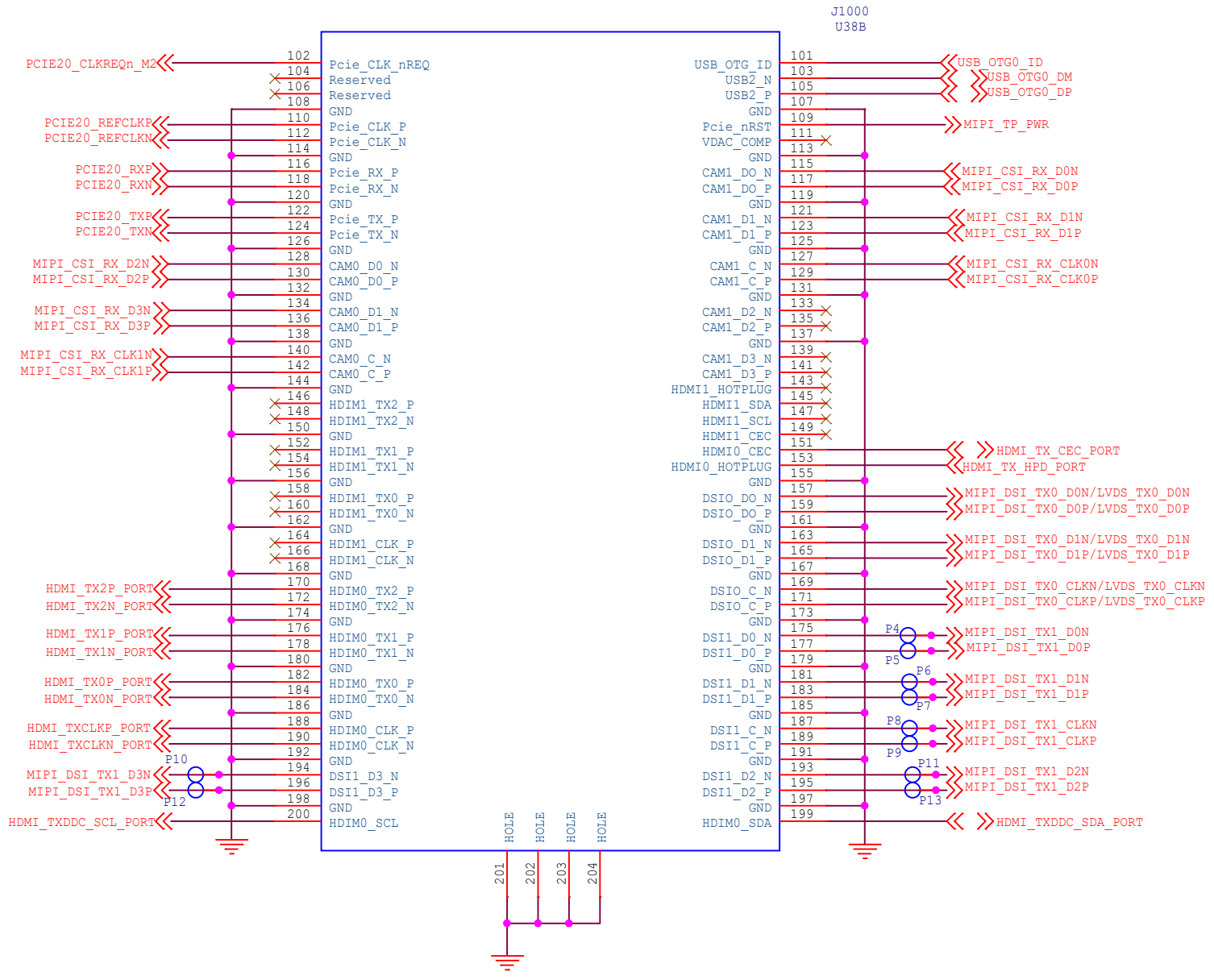


Size	Title: CM3I IO Board	REV
A4	Page Name: POE POWER	V1.3
Date: Monday, November 27, 2023		Sheet 19 of 23

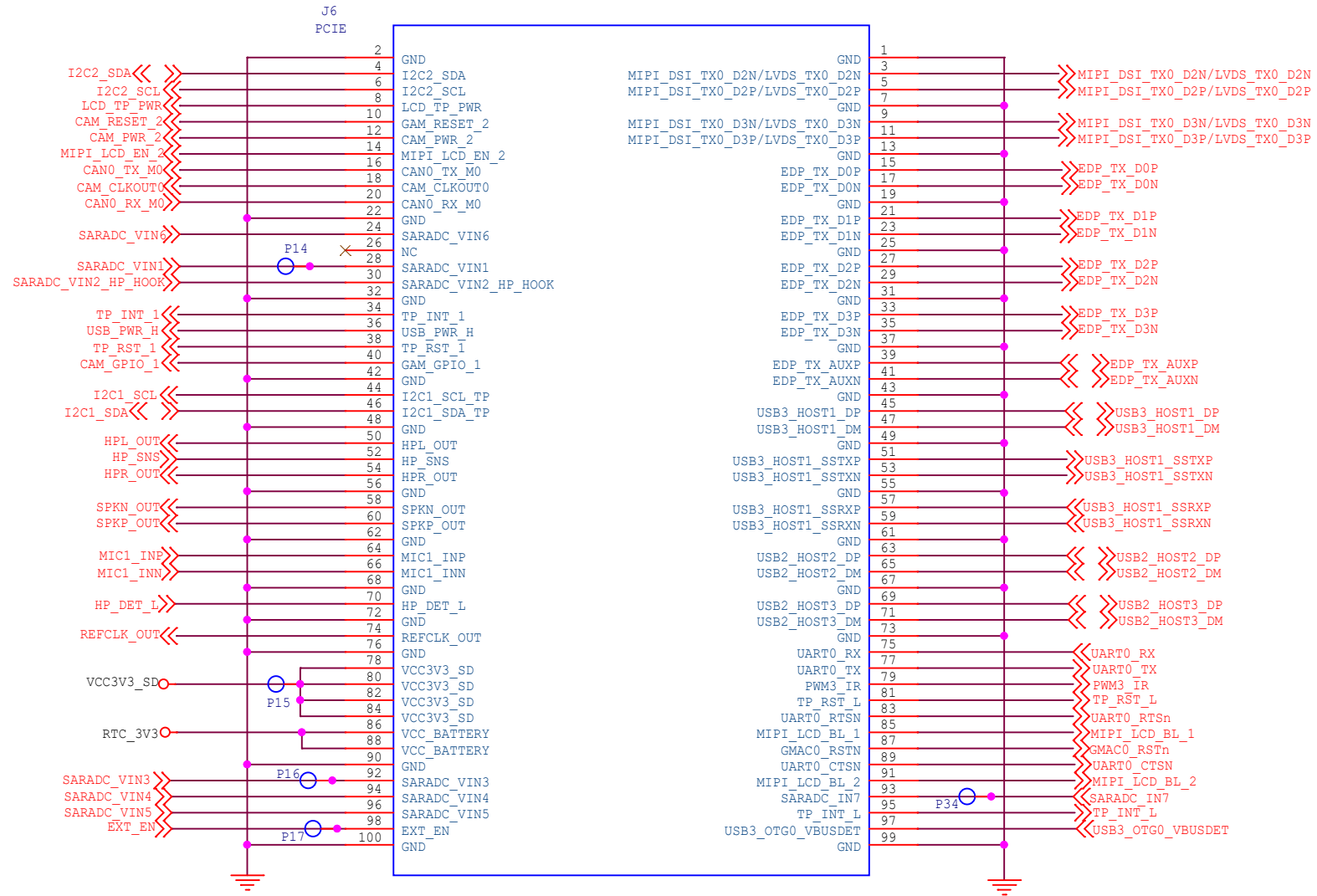




Size	Title: CM3I IO Board	REV
A4	Page Name: GPIO+VCC_Connector	V1.3
Date: Monday, November 27, 2023		
Sheet 20 of 23		



Size	Title: CM3I IO Board	REV
A4	Page Name: High Speed Serial_Connector	V1.3
Date: Monday, November 27, 2023	Sheet 21 of 23	



Size	Title: CM31 IO Board	REV
A4	Page Name: IO_Connector	V1.3
Date: Monday, November 27, 2023	Sheet 22 of 23	

I/O J7

