



Radxa ZERO 2 Pro schematic

V1.2

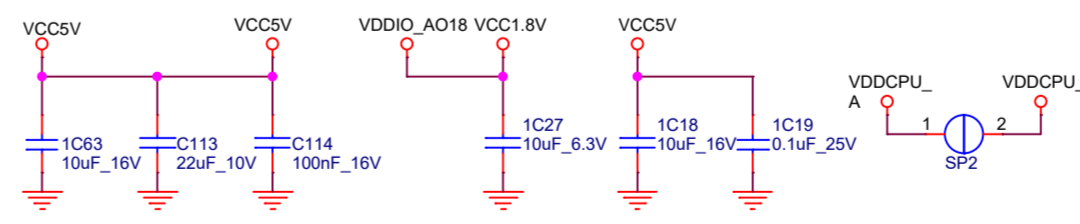
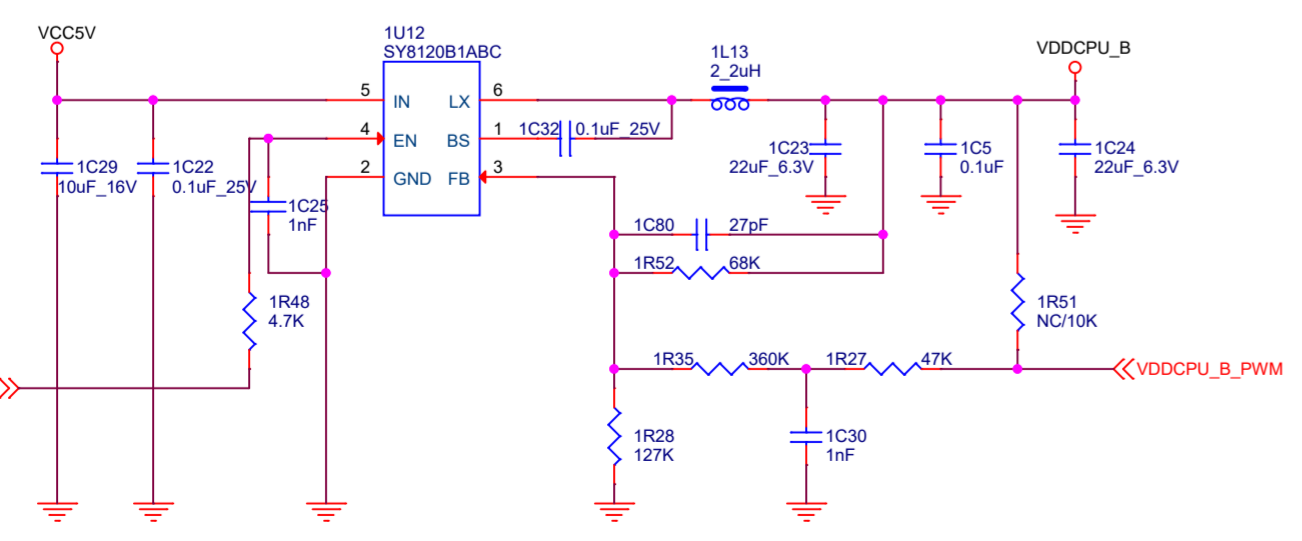
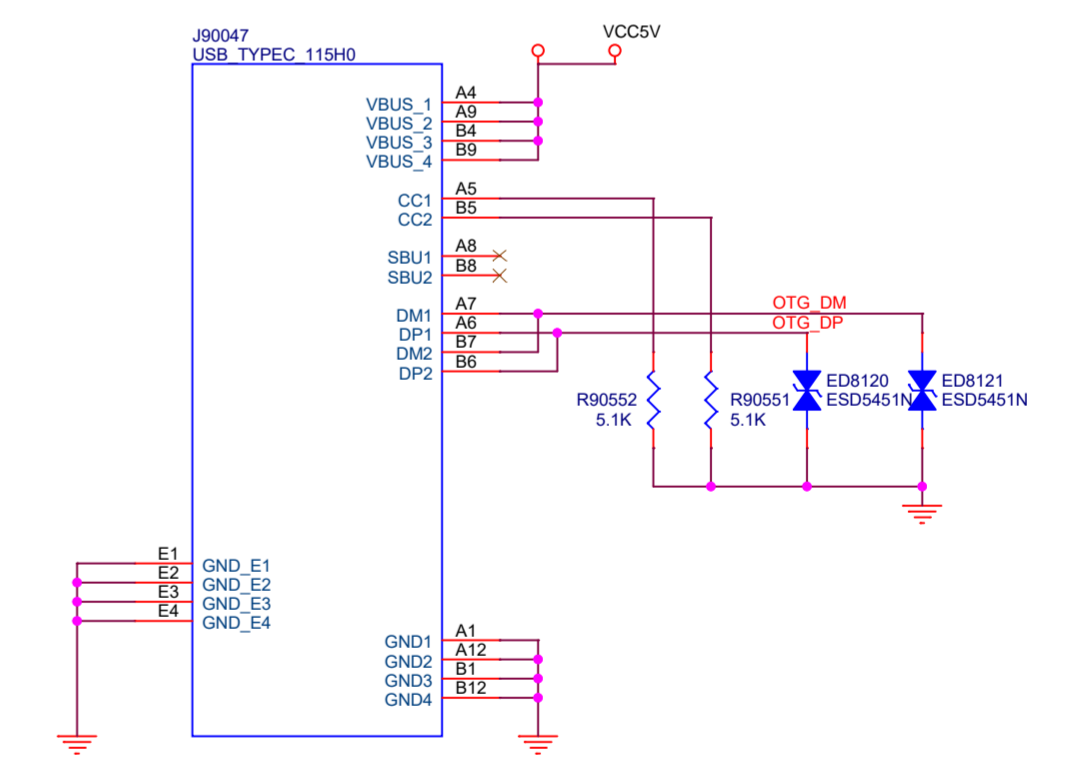
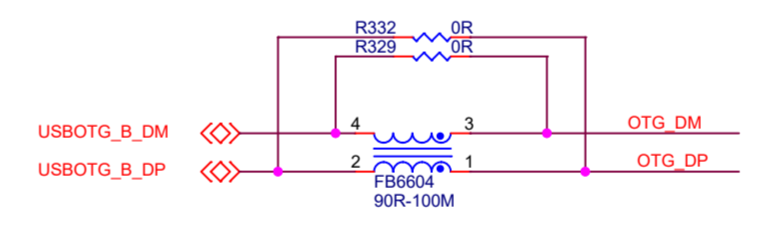
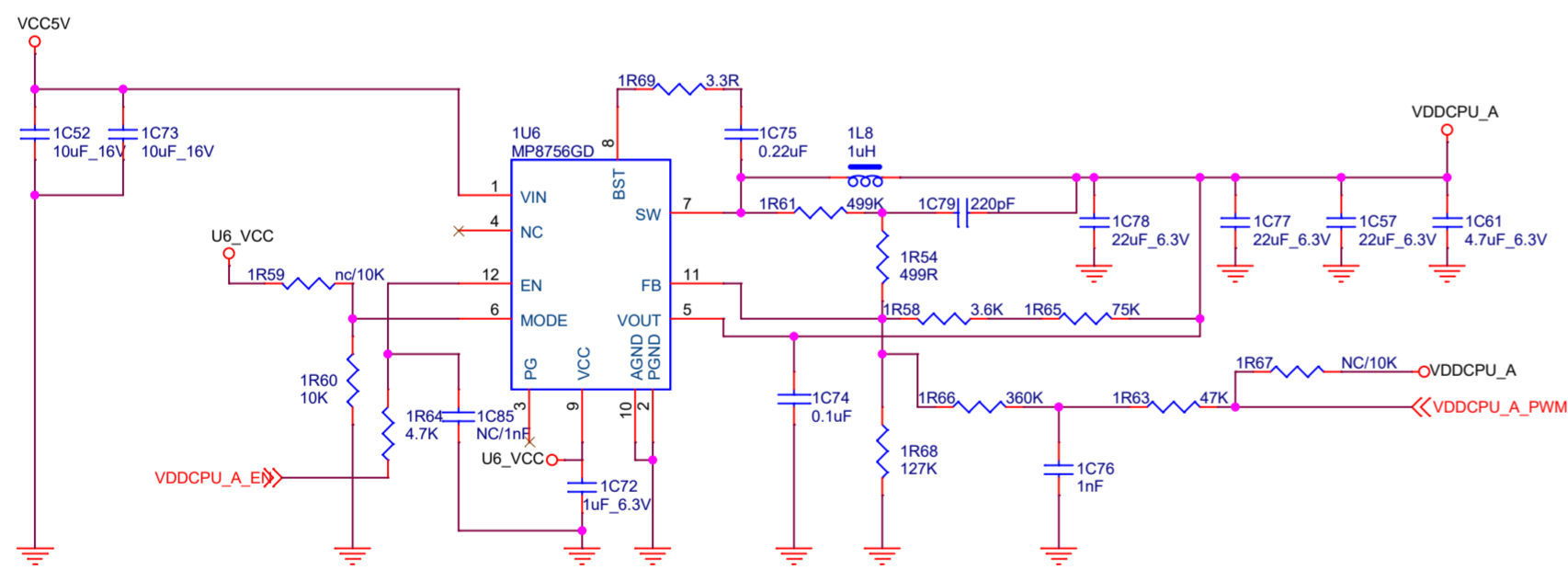
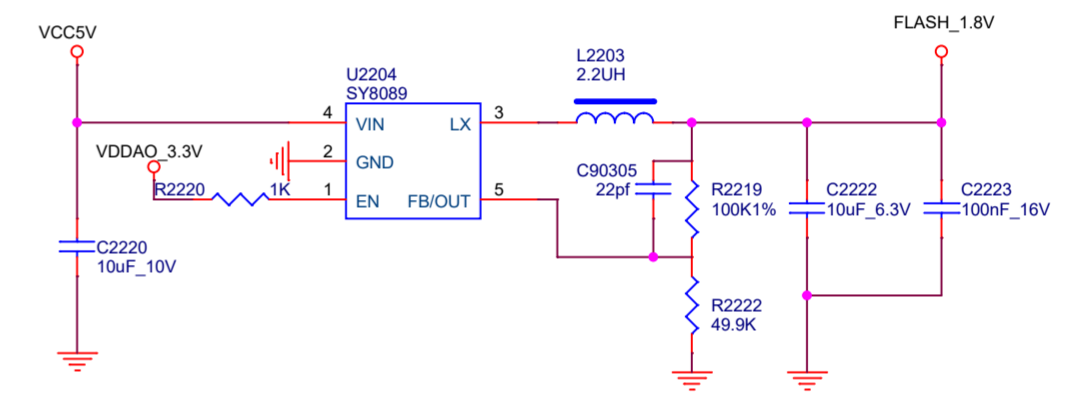
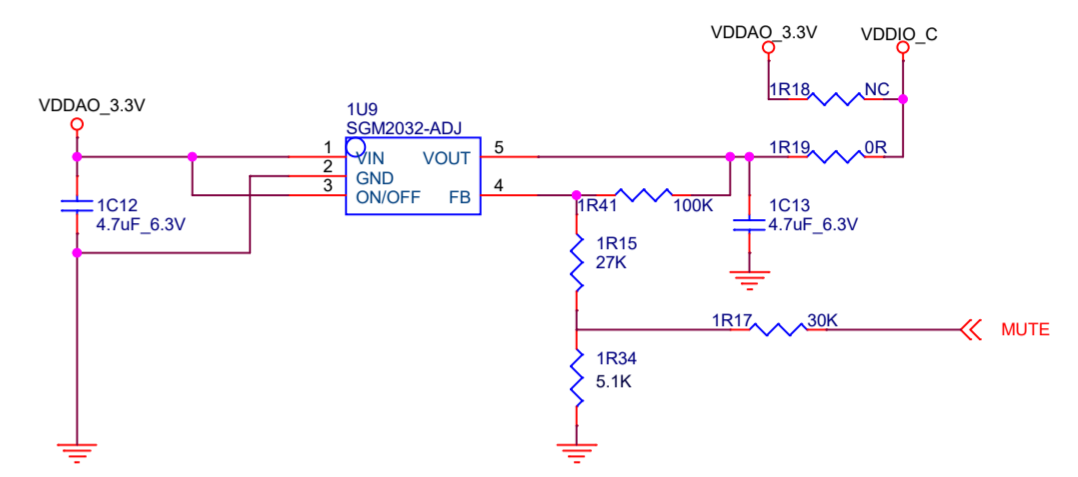
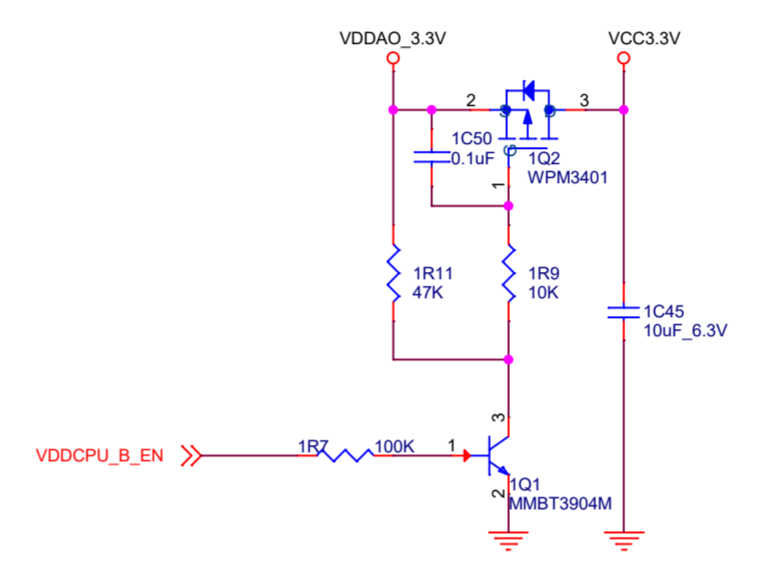
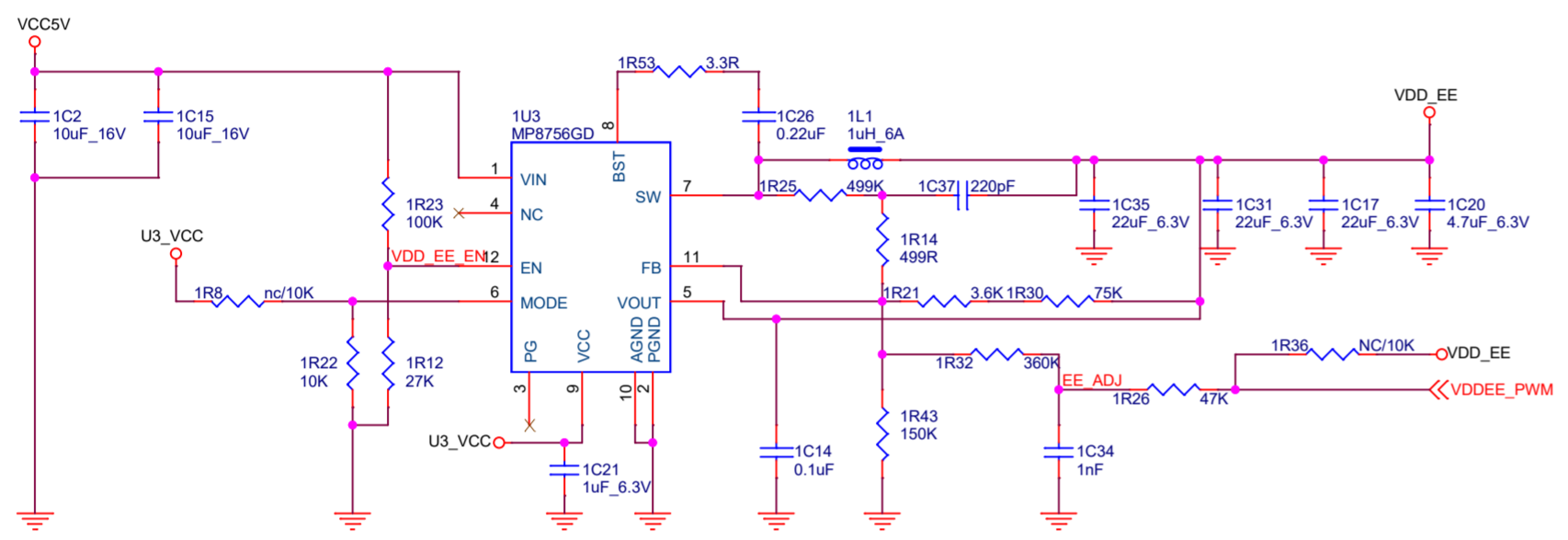
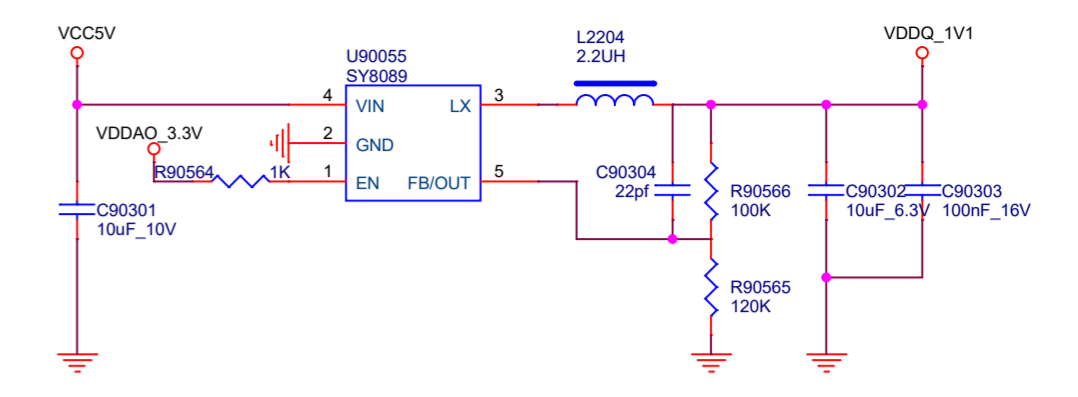
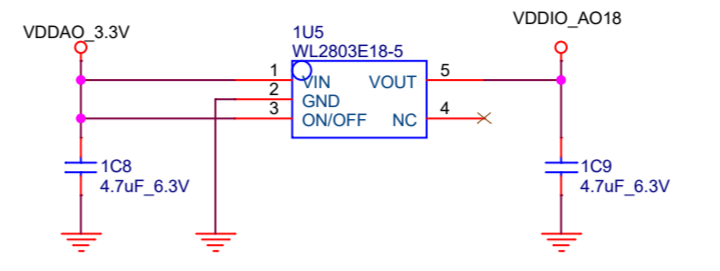
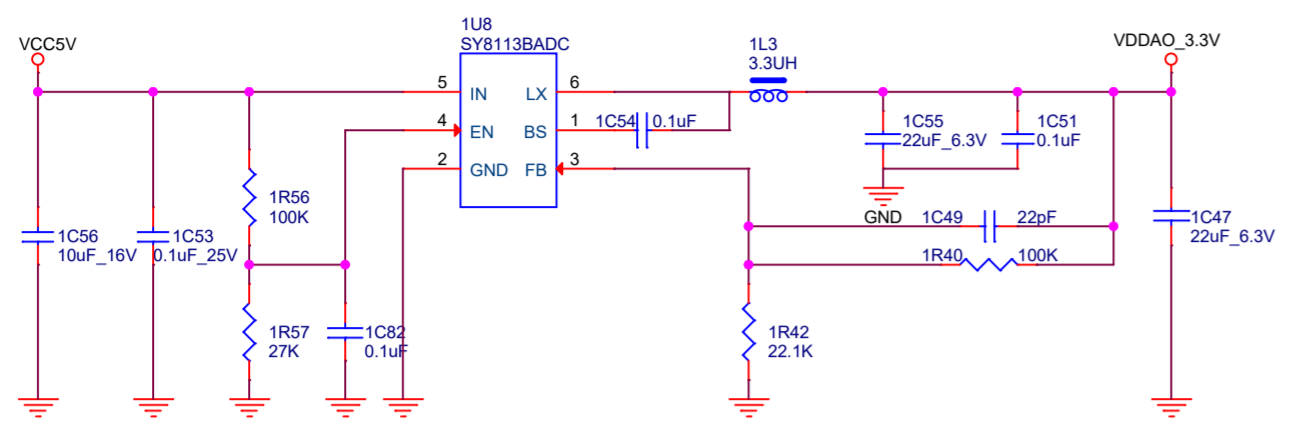


Index

Page 1	01.Cover
Page 2	02.Index
Page 3	03.Block
Page 4	04.Power
Page 5	05.Ethernet/Audio
Page 6	06.Audio
Page 7	07.Flash
Page 8	08.USB & PCIe
Page 9	09.CPU I/O
Page 10	10.LPDDR4
Page 11	11.HDMI & CVBS
Page 12	12.SDIO WIFI
Page 13	13.Panel/CAM/40PIN



Size	Title: Radxa ZERO 2 Pro	REV
A4	Page Name: 02.Index	1.2
Date: Friday, May 17, 2024	Sheet 2 of 13	



U1G
A311D

LIB VER:2018-04-27

ENET_TXP
ENET_TXN
ENET_RXP
ENET_RXN

A42
C42
A44
C44

ENET_ATP

U27 ENET_ATP 1 5T14

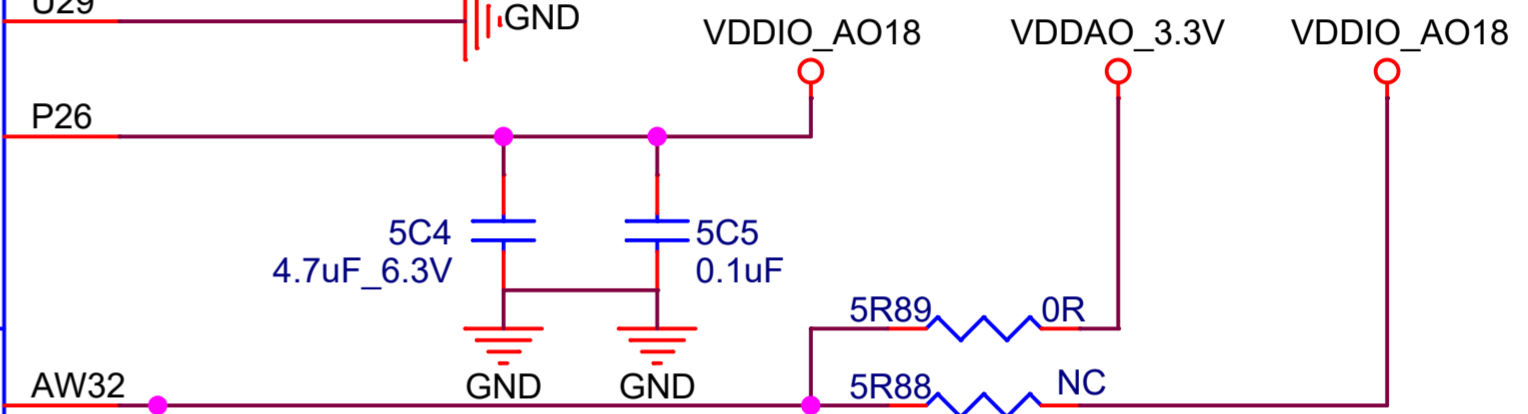
ENET_EXTRES

E36 5R11 2.26K GND

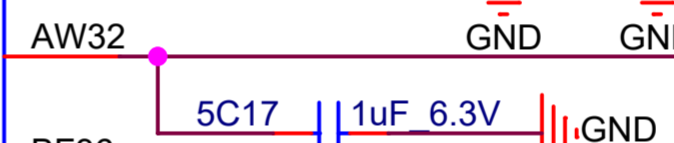
AVSS_ENETPLL

U29 GND

AVDD18_ENET



VDDIO_Z



GPIOZ_0(ETH_MDIO//ISO7816_CLK//BT656_A_VS//I2C_EE_M0_SDA)
GPIOZ_1(ETH_MDC//ISO7816_DATA//BT656_A_HS//I2C_EE_M0_SCL)

BF36 RGMII MDIO I2CM0SDA
BC36 RGMII MDC I2CM0SCL

GPIOZ_2(ETH_RGMII_RX_CLK//TSIN_B_VALID//TDMC_D0//TDMC_DIN0//PDM_DIN0//SDCARD_D0)
GPIOZ_3(ETH_RX_DV//TSIN_B_SOP//BT656_A_CLK//TDMC_D1//TDMC_DIN1//PDM_DIN1//SDCARD_D1)
GPIOZ_4(ETH_RXD0//TSIN_B_DIN0//BT656_A_DIN0//TDMC_D2//TDMC_DIN2//PDM_DIN2//SDCARD_D2)
GPIOZ_5(ETH_RXD1//TSIN_B_CLK//BT656_A_DIN1//TDMC_D3//TDMC_DIN3//PDM_DIN3//SDCARD_D3)
GPIOZ_6(ETH_RXD2_RGMII//TSIN_B_FAIL//BT656_A_DIN2//TDMC_FS//TDMC_SLV_FS//PDM_DCLK//SDCARD_CLK)
GPIOZ_7(ETH_RXD3_RGMII//TSIN_B_DIN1//BT656_A_DIN3//TDMC_SCLK//TDMC_SLV_SCLK//I2C_EE_M0_SDA//SDCARD_CMD)

CARD port on GPIOZ is not bootable

BK42 RGMII RX_CLK GPIOZ2
BM42 RGMII_RXDV GPIOZ3
BM44 RGMII_RXD0 GPIOZ4
BK44 RGMII_RXD1 GPIOZ5
BH42 RGMII_RXD2 GPIOZ6
BK46 RGMII_RXD3 GPIOZ7

GPIOZ_8(ETH_RGMII_TX_CLK//TSIN_B_DIN2//BT656_A_DIN4//MCLK_1//I2C_EE_M0_SCL)
GPIOZ_9(ETH_TXEN//TSIN_B_DIN3//BT656_A_DIN5)
GPIOZ_10(ETH_TXD0//TSIN_B_DIN4//BT656_A_DIN6)
GPIOZ_11(ETH_TXD1//TSIN_B_DIN5//BT656_A_DIN7)
GPIOZ_12(ETH_TXD2_RGMII//TSIN_B_DIN6)
GPIOZ_13(ETH_TXD3_RGMII//TSIN_B_DIN7//GEN_CLK_EE)

BH46 GPIOZ-8
BF42 GPIOZ-9
BF46
BF44
BD42 LCD_BL_PWM
BD44

GPIOZ_14 (OD3.3V) (ETH_LINK_LED//I2C_EE_M2_SDA)
GPIOZ_15 (OD3.3V) (ETH_ACT_LED//I2C_EE_M2_SCL)

BF39
BB42



Size	Title: Radxa ZERO 2 Pro	REV
A4	Page Name: 05.Ethernet/Audio	1.2
Date: Friday, May 17, 2024	Sheet 5 of 13	

U11
A311D

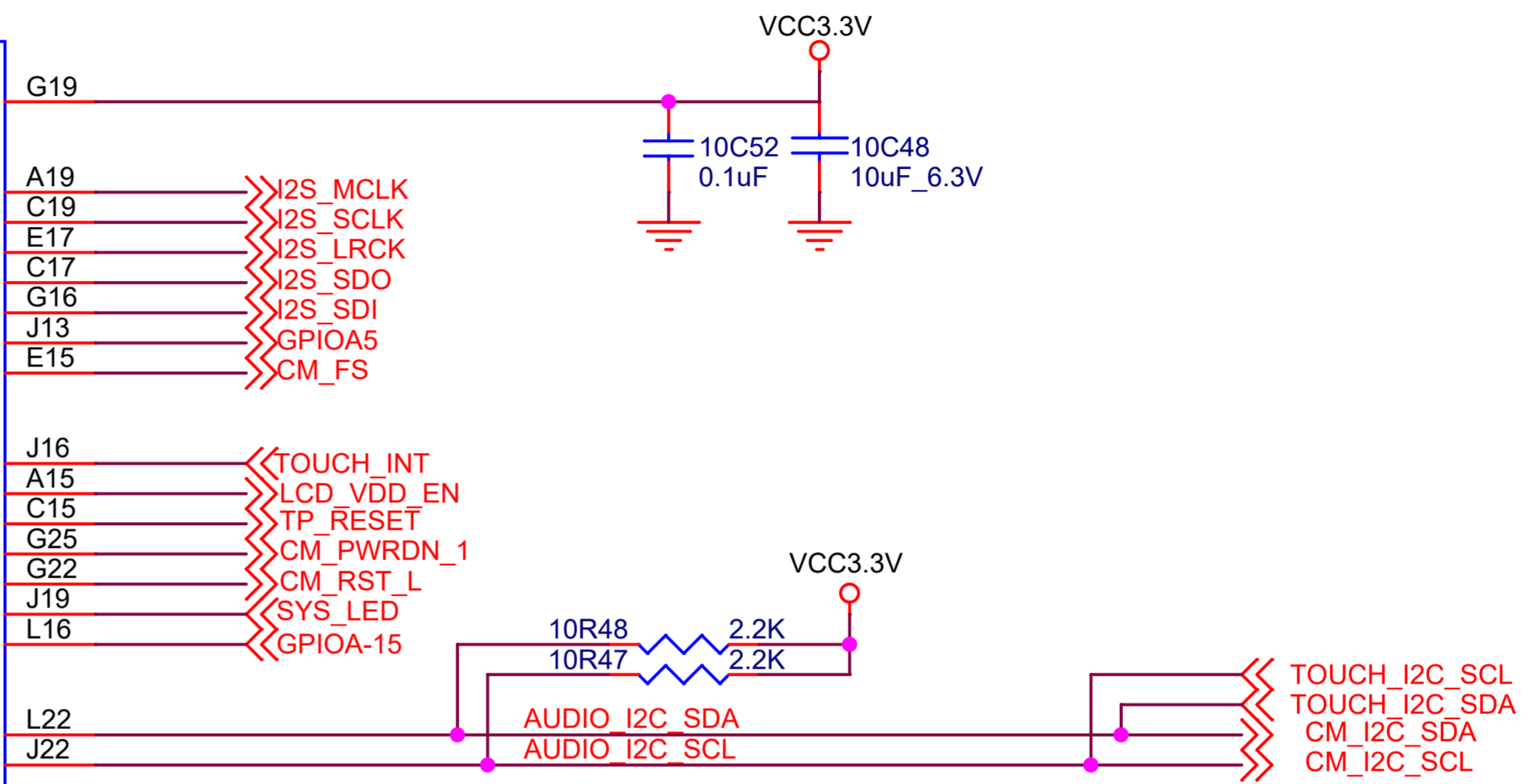
LIB VER:2018-03-15
Preliminary Symbol

VDDIO_A

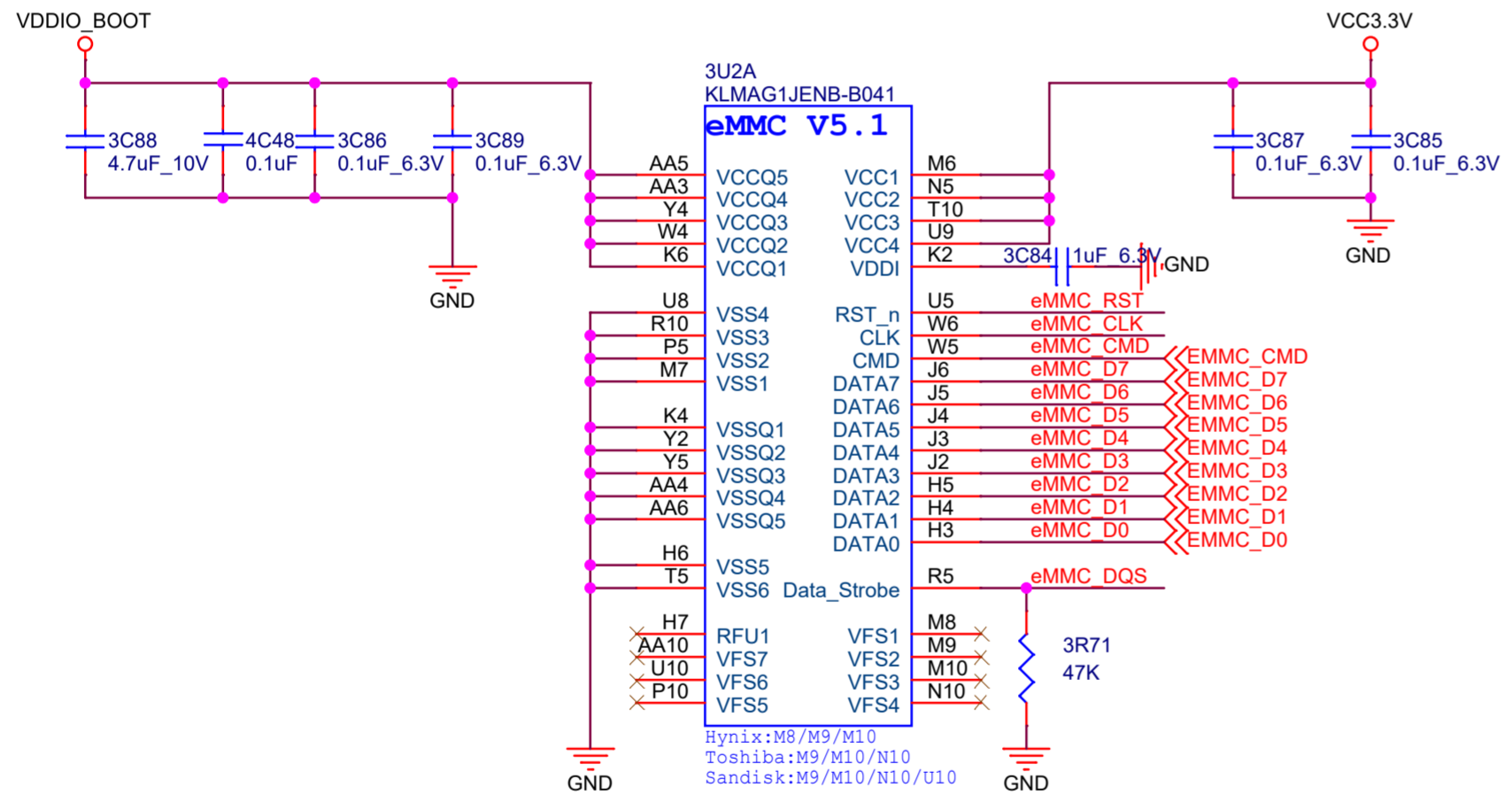
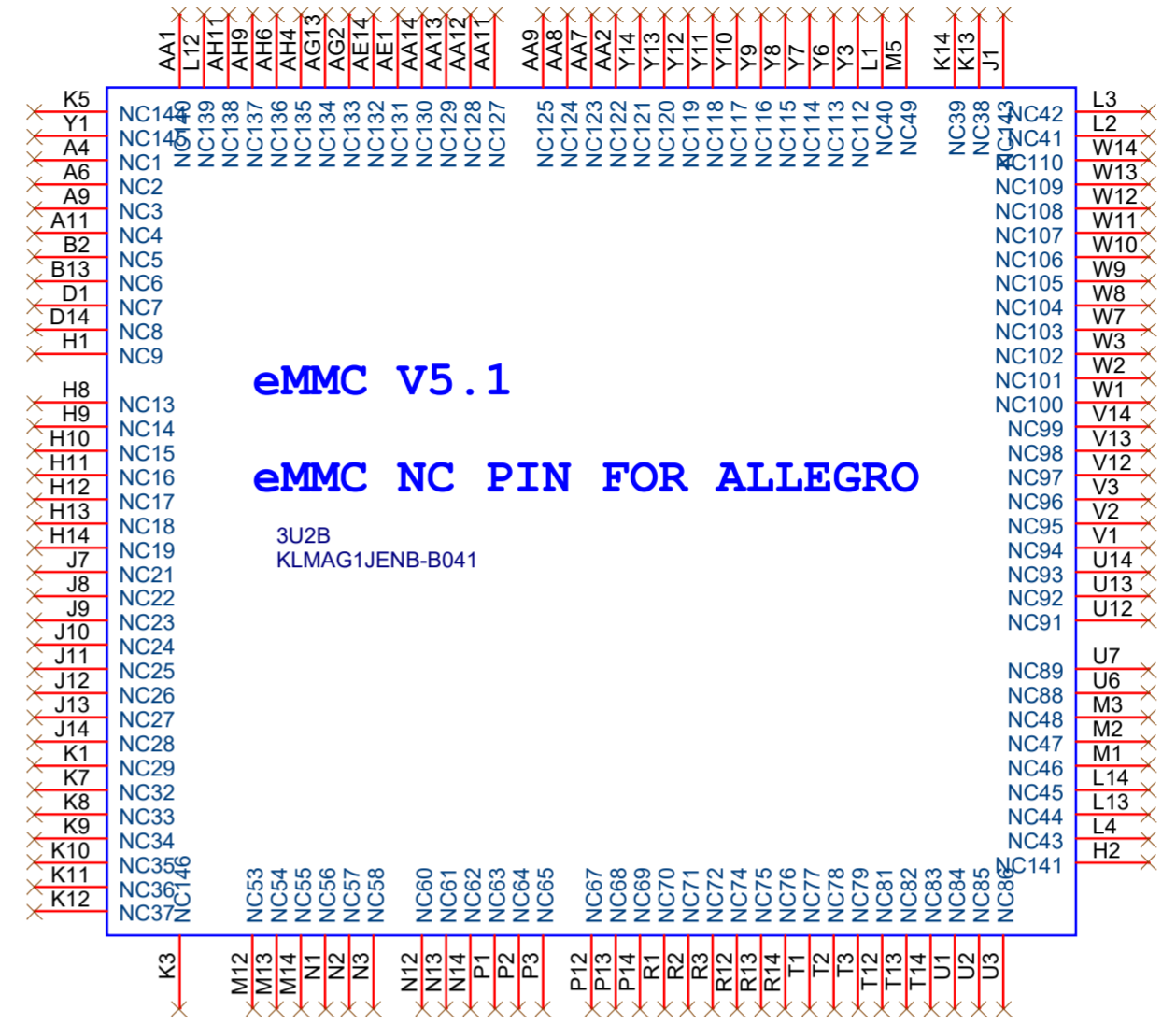
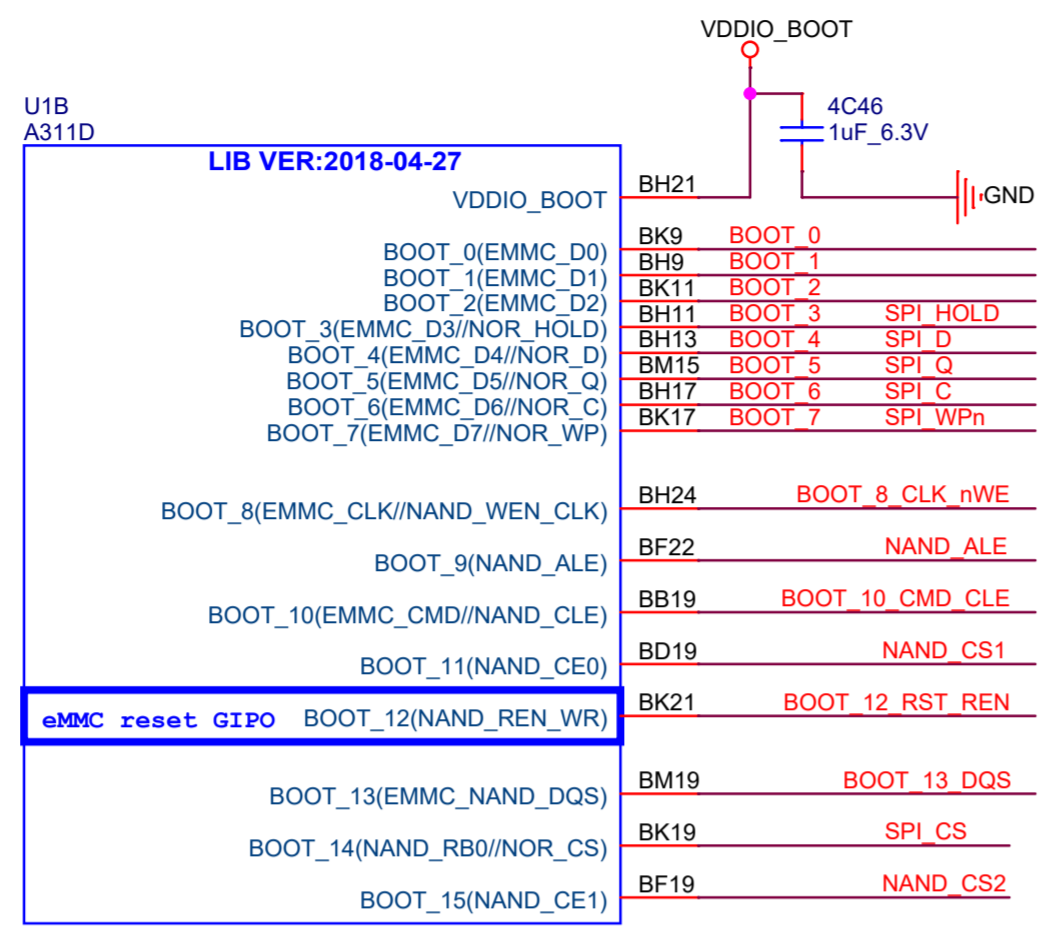
GPIOA_0(MCLK_0)
GPIOA_1(TDMB_SCLK//TDMB_SLV_SCLK)
GPIOA_2(TDMB_FS//TDMB_SLV_FS)
GPIOA_3(TDMB_D0//TDMB_DIN0)
GPIOA_4(TDMB_D1//TDMB_DIN1)
GPIOA_5(TDMB_D2//TDMB_DIN2//PDM_DIN3)
GPIOA_6(TDMB_D3//TDMB_DIN3//PDM_DIN2)

GPIOA_7(TDMC_D3//TDMC_DIN3//PDM_DCLK)
GPIOA_8(TDMC_D2//TDMC_DIN2//PDM_DIN0)
GPIOA_9(TDMC_D1//TDMC_DIN1//PDM_DIN1)
GPIOA_10(TDMC_D0//TDMC_DIN0//SPDIF_IN)
GPIOA_11(MCLK_1//SPDIF_OUT)
GPIOA_12(TDMC_SCLK//TDMC_SLV_SCLK//SPDIF_IN)
GPIOA_13(TDMC_FS//TDMC_SLV_FS//SPDIF_OUT)

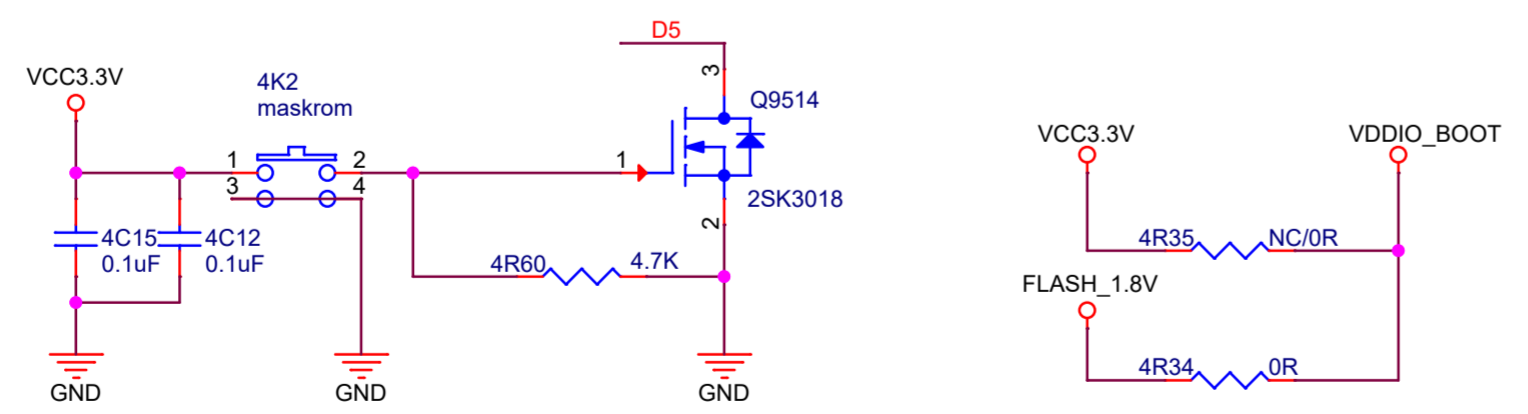
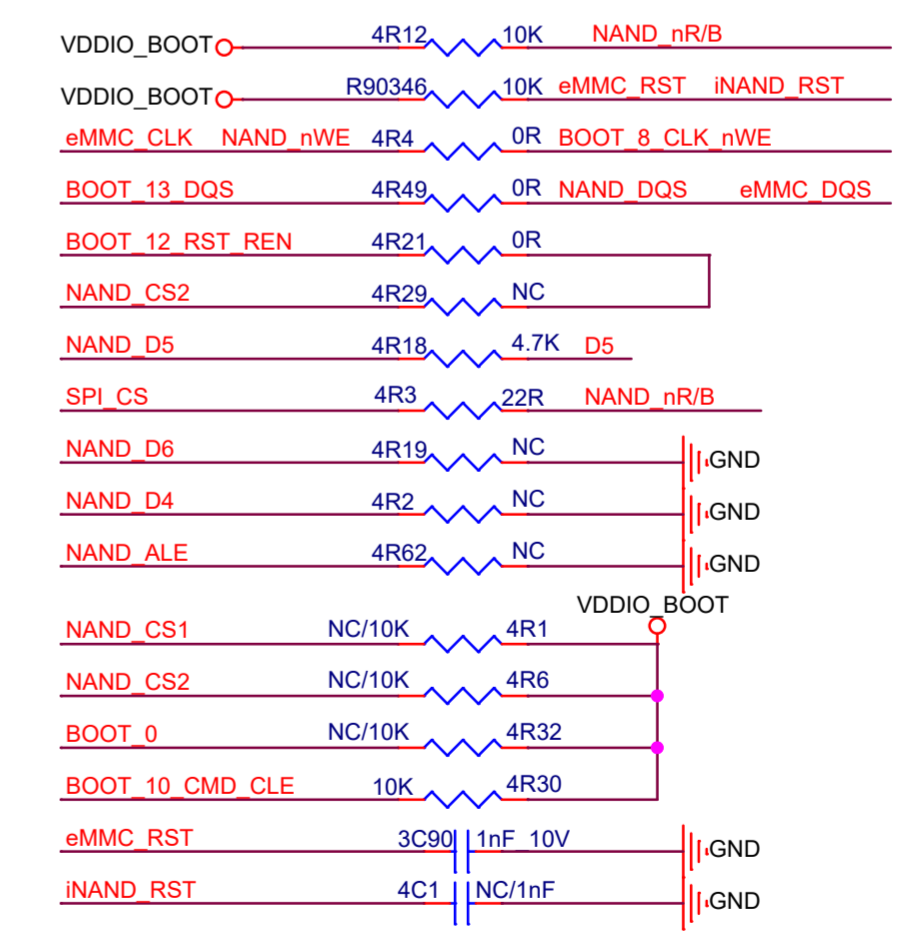
GPIOA_14(WORLD_SYNC//I2C_EE_M3_SDA)
GPIOA_15(IR_REMOTE_IN//I2C_EE_M3_SCL)

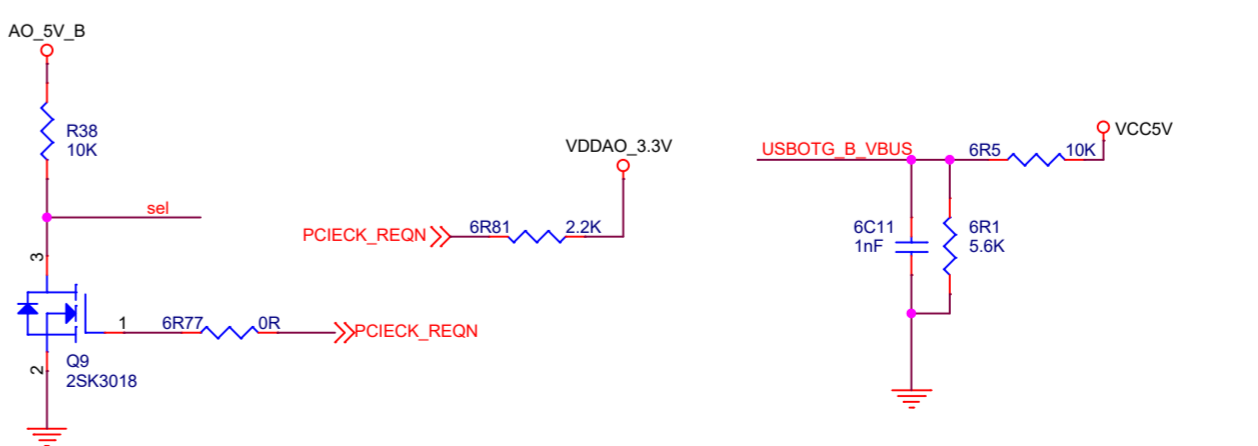
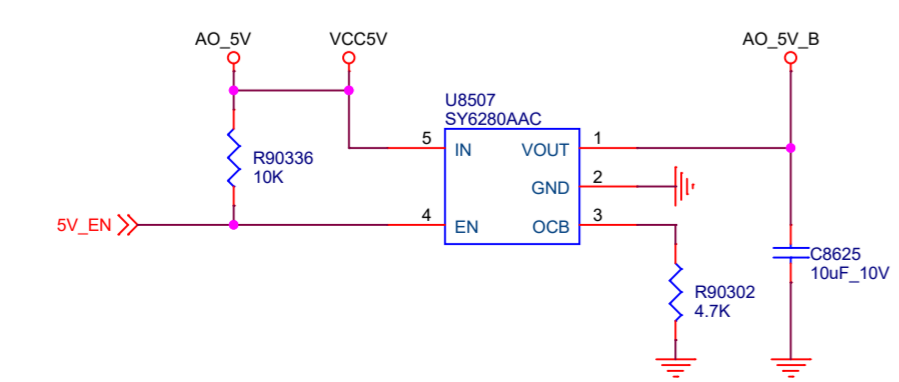
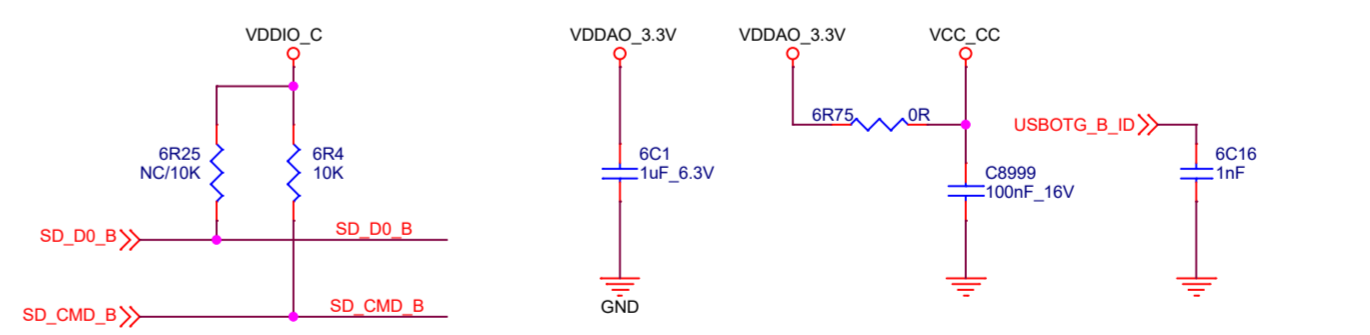
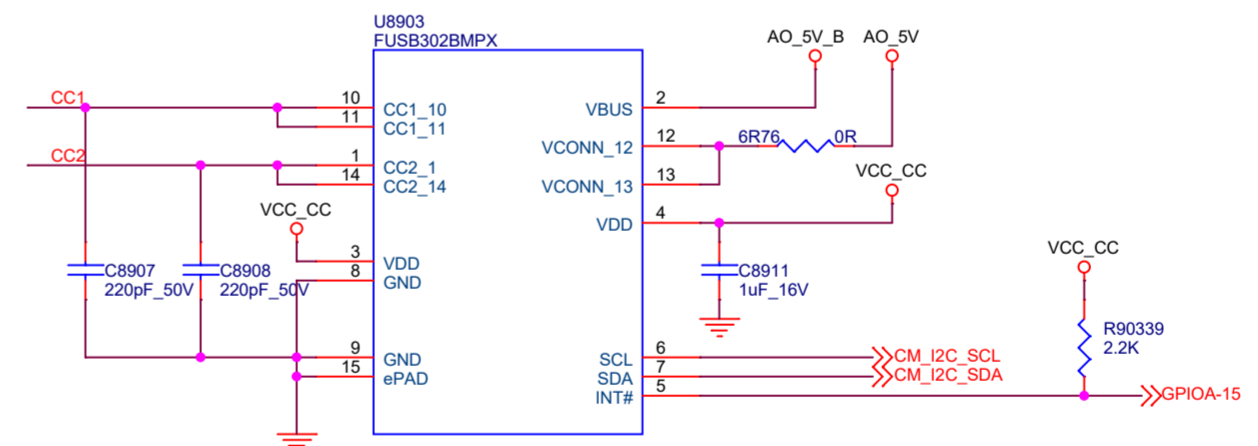
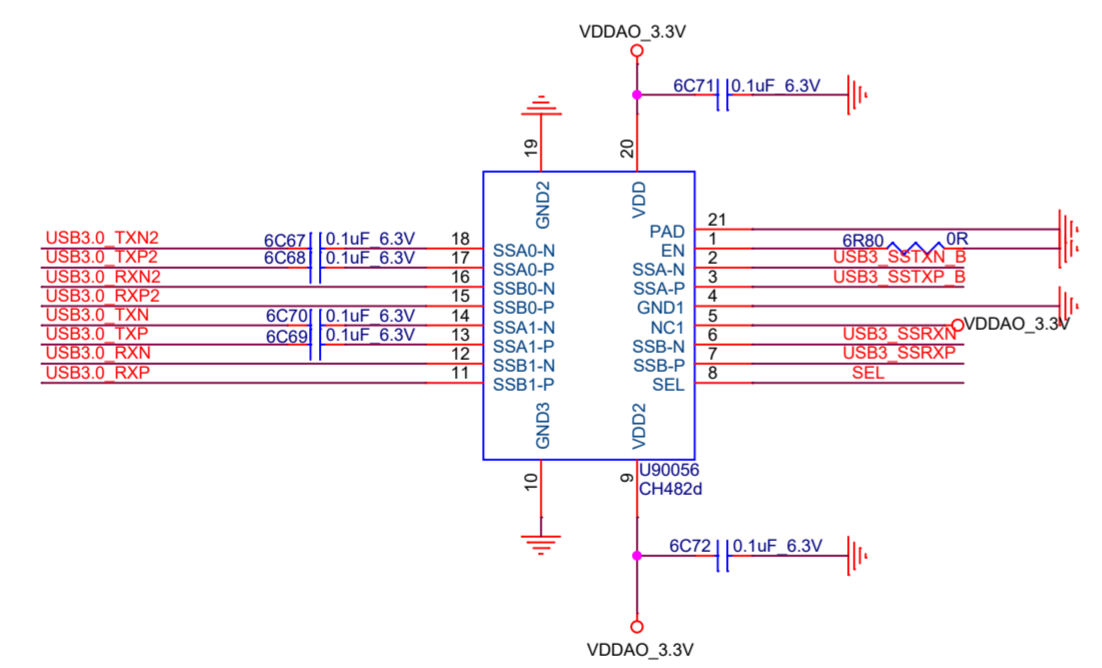
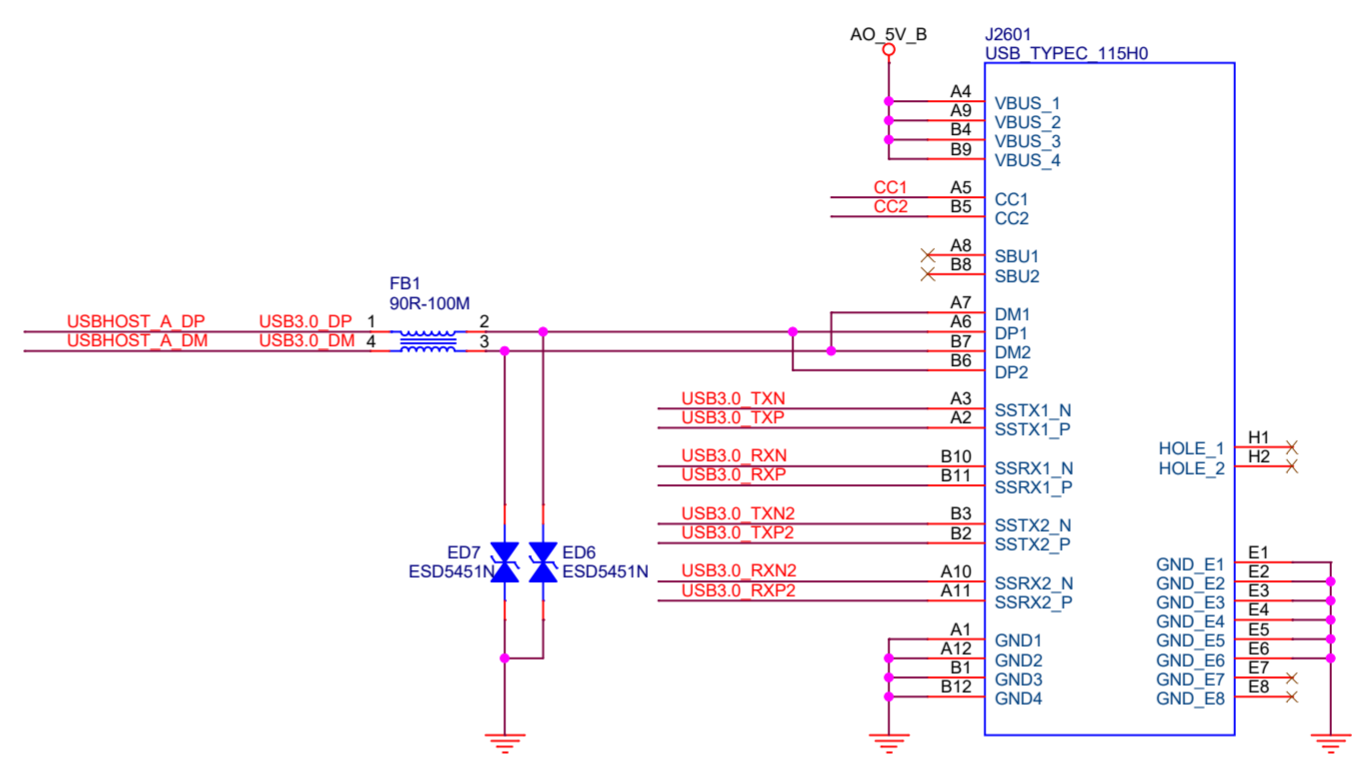
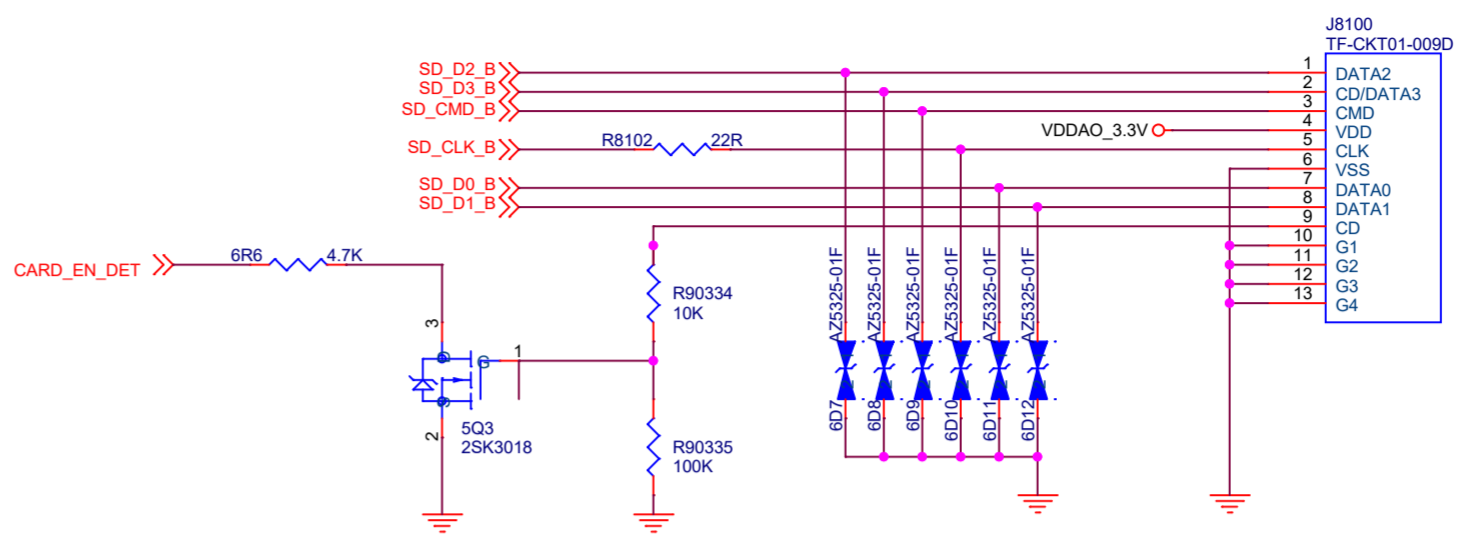
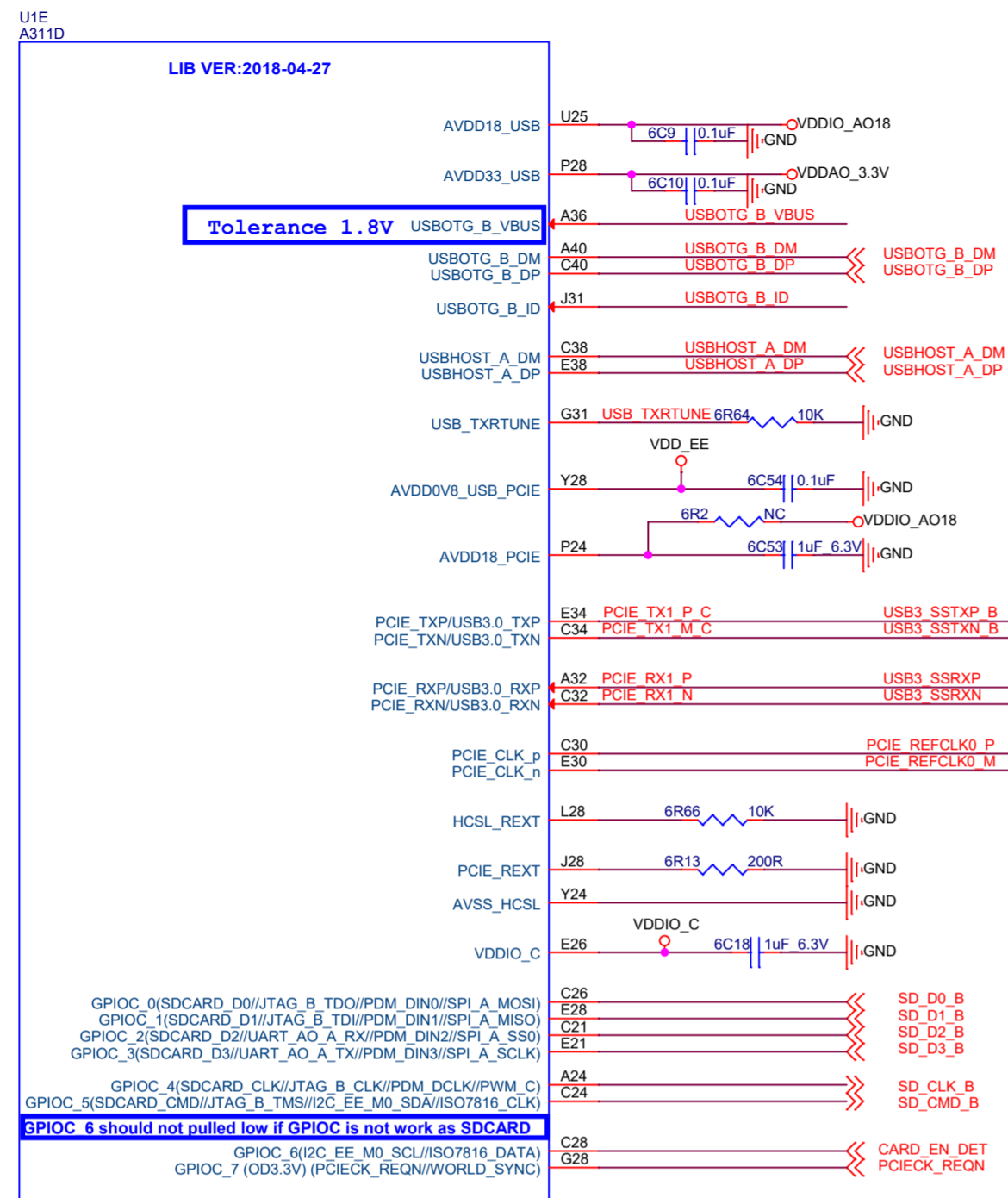


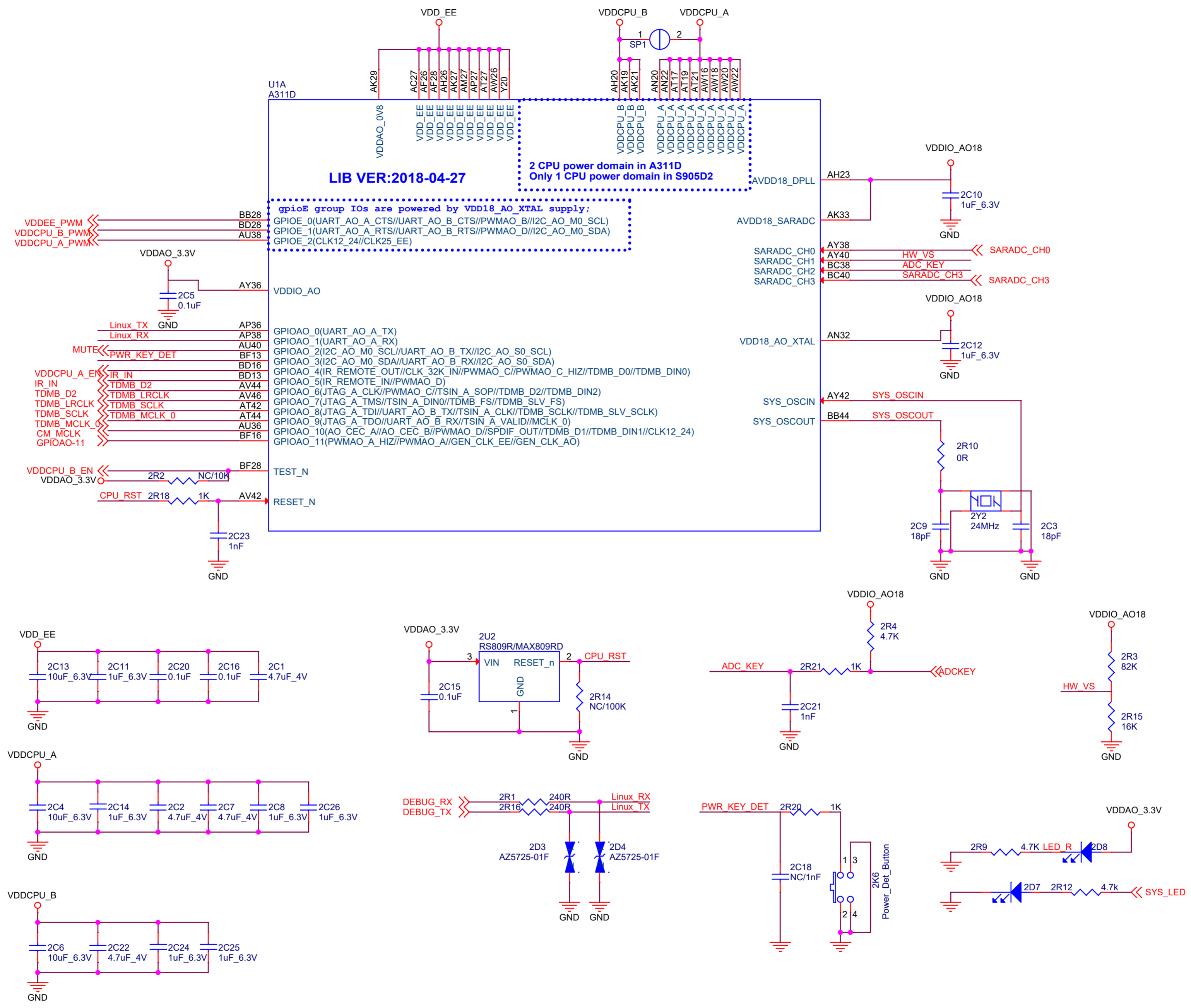
Size	Title: Radxa ZERO 2 Pro	REV
A4	Page Name: 06.Audio	1.2
Date: Friday, May 17, 2024	Sheet 6 of 13	



EMMC_CLK	eMMC CLK
EMMC_STRB	eMMC DQS
iNAND_RST	NAND nRE
eMMC D0	NAND D0
eMMC D4	NAND D4
eMMC D5	NAND D5
eMMC D6	NAND D6
eMMC CMD	NAND CLE
eMMC D1	NAND D1
eMMC D2	NAND D2
eMMC D3	NAND D3
eMMC D7	NAND D7
	BOOT 12 RST REN
	BOOT 0
	BOOT 4
	BOOT 5
	BOOT 6
	BOOT 10 CMD CLE
	BOOT 1
	BOOT 2
	BOOT 3
	BOOT 7







LIB VER:2018-04-27

2 CPU power domain in A311D
Only 1 CPU power domain in S905D2

gpioE group IOs are powered by VDD18_AO_XTAL supply;
GPIOE_0(UART_AO_A_CTS//UART_AO_B_CTS//PWMAO_B//I2C_AO_M0_SCL)
GPIOE_1(UART_AO_A_RTS//UART_AO_B_RTS//PWMAO_D//I2C_AO_M0_SDA)
GPIOE_2(CLK12_24//CLK25_EE)

